

Claudin-7 Mouse Monoclonal Antibody(3F7)

Catalog No: RA10259

Basic Information

Host species	Mouse
Applications	WB, IHC
Species Cross-Reactivity	H, M
Specificity	The antibody detects endogenous Claudin-7 proteins.
Recommended dilutions	IHC: 1:100~200 Optimal dilutions should be determined by the end user.

Applications

Formulation	PBS, pH 7.4, containing 0.02% sodium azide as Preservative and 50% Glycerol.
Storage	Store at -20°C. Avoid repeated freeze-thaw cycles.
Concentration	1 mg/ml
Clonality	Monoclonal

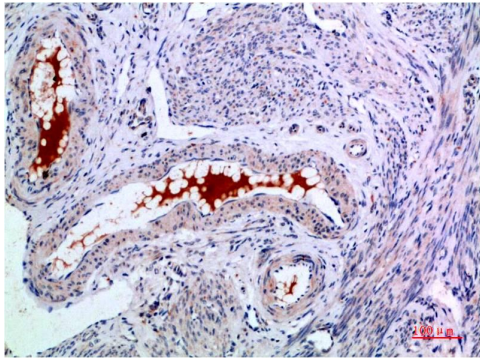
Background

Alternative Names	CLDN7, CEPTL2, CPETRL2
Observed band	25
Human Gene ID	9075
Human Swiss-Prot Number	P57739

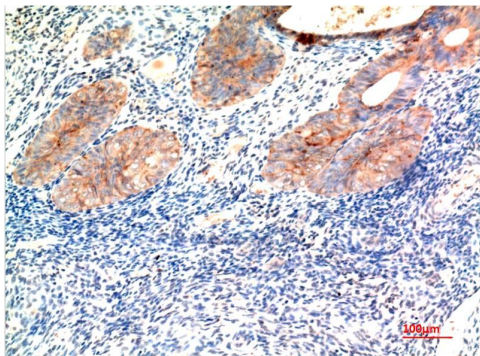
Background

claudin 7(CLDN7) Homo sapiens This gene encodes a member of the claudin family. Claudins are integral membrane proteins and components of tight junction strands. Tight junction strands serve as a physical barrier to prevent solutes and water from passing freely through the paracellular space between epithelial or endothelial cell sheets, and also play critical roles in maintaining cell polarity and signal transductions. Differential expression of this gene has been observed in different types of malignancies, including breast cancer, ovarian cancer, hepatocellular carcinomas, urinary tumors, prostate cancer, lung cancer, head and neck cancers, thyroid carcinomas, etc.

Selected Validation Data



Immunohistochemical analysis of paraffin-embedded Human Endometrial Carcinoma Tissue using Claudin-7 Mouse mAb diluted at 1:200



Immunohistochemical analysis of paraffin-embedded Human Endometrial Carcinoma Tissue using Claudin-7 Mouse mAb diluted at 1:200.