

# Claudin-2 Mouse Monoclonal Antibody (8H11)

**Catalog No: RA10252**

## Basic Information

Host species	Mouse
Applications	WB,IHC
Species Cross-Reactivity	H, R, M
Specificity	Claudin-2 antibody detects endogenous Claudin-2 proteins.
Recommended dilutions	WB: 1:1,000~2,000    IHC: 1:100~200 Optimal dilutions should be determined by the end user.

## Applications

Formulation	PBS, pH 7.4, containing 0.02% sodium azide as Preservative and 50% Glycerol.
Storage	Store at -20°C. Avoid repeated freeze-thaw cycles.
Concentration	1 mg/ml
Clonality	Monoclonal

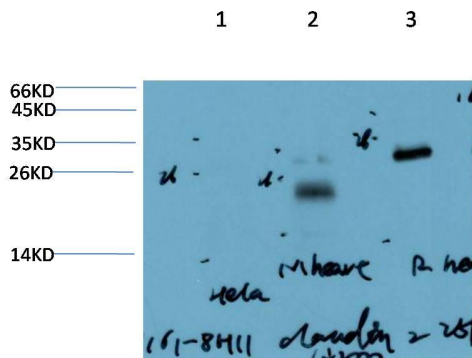
## Background

Alternative Names	Claudin2,CLDN2,SP82
Observed band	25
Human Gene ID	9075
Human Swiss-Prot Number	P57739

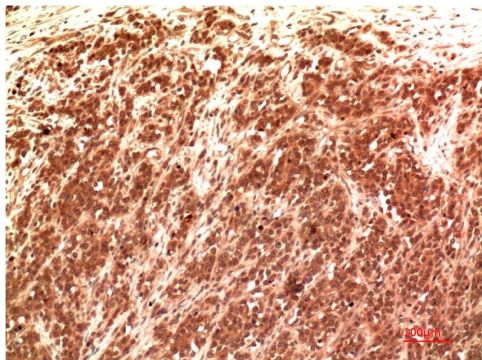
### Background

The claudin family is composed of 23 integral membrane proteins, and their expression, which varies among tissue types, may determine both the strength and properties of the epithelial barrier. Alteration in claudin protein expression pattern is associated with several types of cancer . Claudin-2 is expressed primarily in the proximal tubule of the normal mammalian kidney, where it regulates transepithelial ion (e.g., Na<sup>+</sup>, Cl<sup>-</sup>) reabsorption . Increased expression of Claudin-2 has been reported in some cancer cell lines , including A549 lung adenocarcinoma cells, where its nuclear distribution was positively associated with enhanced proliferation .

## Selected Validation Data



Western blot analysis of 1) Hela Cell Lysate, 2) Mouse Heart Tissue Lysate, 3) Rat Heart Tissue Lysate using Claudin-2 Mouse mAb diluted at 1:2000.



Immunohistochemical analysis of paraffin-embedded Human Kidney Carcinoma Tissue using Claudin-2 Mouse mAb diluted at 1:200.