

# CD23 Mouse Monoclonal Antibody (1E9)

## Catalog No: RA10242

### Basic Information

Host species	Mouse
Applications	IHC
Species Cross-Reactivity	H,M,R
Specificity	The CD23 antibody detects endogenous CD23 proteins.
Recommended dilutions	IHC: 1:200 Optimal dilutions should be determined by the end user.

### Applications

Formulation	PBS, pH 7.4, containing 0.02% sodium azide as Preservative and 50% Glycerol.
Storage	Store at -20°C. Avoid repeated freeze-thaw cycles.
Concentration	1 mg/ml
Clonality	Monoclonal

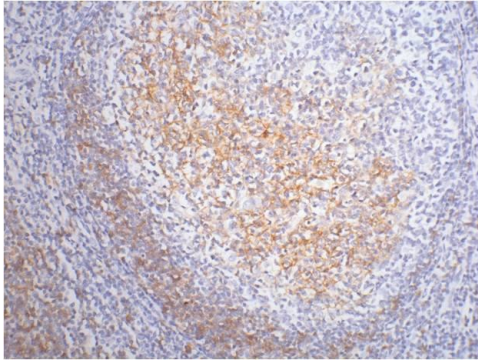
### Background

Alternative Names	
Observed band	28,38,49
Human Gene ID	2208
Human Swiss-Prot Number	P06734

#### Background

The CD23 antigen is the low affinity IgE Fc receptor, which is a 49 kDa protein with 38 and 28 kDa fragments. It is expressed on most mature, conventional B cells and can also be found on the surface of T cells, macrophages, platelets and EBV transformed B lymphoblasts. Expression of CD23 has been detected in neoplastic cells from cases of B cell chronic Lymphocytic leukemia. CD23 is expressed by B cells in the follicular mantle but not by proliferating germinal centre cells. CD23 is also expressed by eosinophils.

## Selected Validation Data



IHC staining of Human tonsil tissue paraffin-embedded with CD23 mouse mAb (1E9) diluted at 1:200.