

ErbB2-HER-2 Mouse Monoclonal Antibody (11H9)

Catalog No: RA10238

Basic Information

Host species	Mouse
Applications	WB, IHC
Species Cross-Reactivity	H, M, R
Specificity	The ErbB-2/HER-2 Mouse Monoclonal antibody detects endogenous ErbB-2/HER-2 proteins.
Recommended dilutions	WB: 1:2,000-4,000 IHC: 1:200 Optimal dilutions should be determined by the end user.

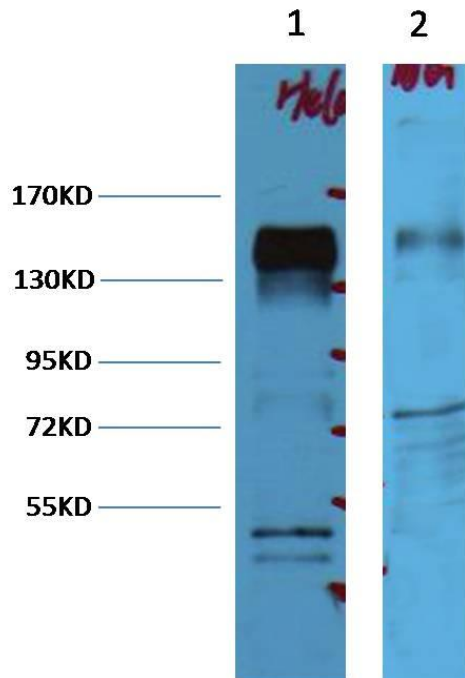
Applications

Formulation	PBS, pH 7.4, containing 0.02% sodium azide as Preservative and 50% Glycerol.
Storage	Store at -20°C. Avoid repeated freeze-thaw cycles.
Concentration	1 mg/ml
Clonality	Monoclonal

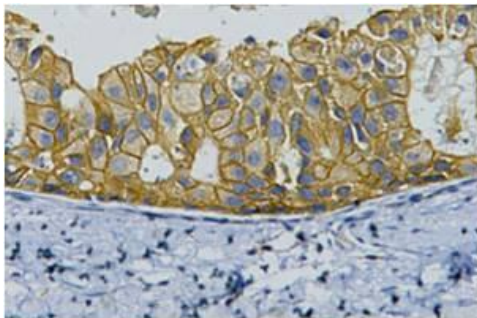
Background

Alternative Names	
Observed band	138
Human Gene ID	2064
Human Swiss-Prot Number	P04626
Background	ErbB 2 is a receptor tyrosine kinase of the ErbB 2 family. It is closely related in structure to the epidermal growth factor receptor. ErbB 2 oncoprotein is detectable in a proportion of breast and other adenocarcinomas, as well as transitional cell carcinomas. In the case of breast cancer, expression determined by immunohistochemistry has been shown to be associated with poor prognosis.

Selected Validation Data



Western blot analysis of 1) HeLa, 2) Mouse Brain with ErbB-2/HER-2 mAb diluted at 1:4,000.



IHC staining of human breast cancer tissue with ErbB-2/HER-2 mouse mAb(11H9) diluted at 1:200.