

# Collagen II Mouse Monoclonal Antibody(9F11)

## Catalog No: RA10231

### Basic Information

Host species	Mouse
Applications	IHC
Species Cross-Reactivity	H,R,M
Specificity	The Antibody can detects endogenous Collagen II proteins.
Recommended dilutions	IHC: 1:100-200 Optimal dilutions should be determined by the end user.

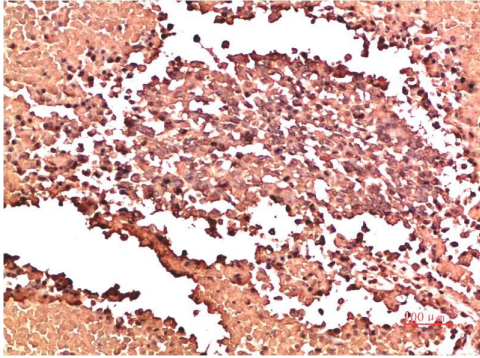
### Applications

Formulation	PBS, pH 7.4, containing 0.02% sodium azide as Preservative and 50% Glycerol.
Storage	Store at -20°C. Avoid repeated freeze-thaw cycles.
Concentration	1 mg/ml
Clonality	Monoclonal

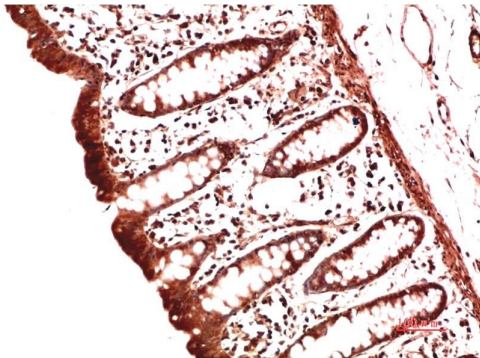
### Background

Alternative Names	Alpha 1 type II collagen , AOM, Col2a1 antibody
Observed band	142
Human Gene ID	1280
Human Swiss-Prot Number	P02458
Background	Collagens are fibrous, extracellular matrix proteins with high tensile strength and are the major components of connective tissue, such as tendons and cartilage. In cartilage, Collagen Type II constitutes the bulk of the fibril. Sensitization with Collagen Type II induces an erosive polyarthritis in rats, mice and higher primates which can resemble rheumatoid arthritis and relapsing polychondritis.

## Selected Validation Data



Immunohistochemical analysis of paraffin-embedded Human Lung Carcinoma Tissue using Collagen II Mouse mAb diluted at 1:200



Immunohistochemical analysis of paraffin-embedded Human Colon Carcinoma Tissue using Collagen II Mouse mAb diluted at 1:200