

# p38 Mouse Monoclonal Antibody(8C11)

## Catalog No: RA10206

### Basic Information

|                          |   |
|--------------------------|---|
| Host species             | Mouse   |
| Applications             | IHC   |
| Species Cross-Reactivity | H,R,M   |
| Specificity              | The Antibody can detects endogenous p38 proteins.                         |
| Recommended dilutions    | IHC: 1:100-200<br>Optimal dilutions should be determined by the end user. |

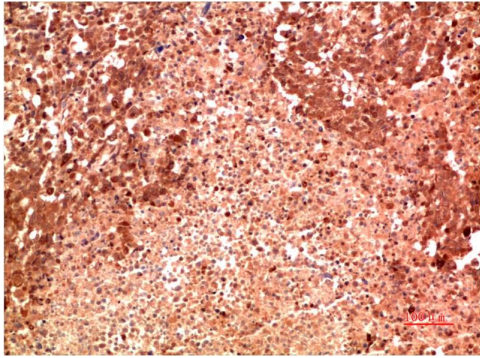
### Applications

|               |  |
|---------------|--|
| Formulation   | PBS, pH 7.4, containing 0.02% sodium azide as Preservative and 50% Glycerol. |
| Storage       | Store at -20°C. Avoid repeated freeze-thaw cycles.                           |
| Concentration | 1 mg/ml  |
| Clonality     | Monoclonal   |

### Background

|                         |   |
|-------------------------|---|
| Alternative Names       | MAP kinase p38 alpha, p38 MAP kinase, CSBP , RK, MAPK 14 antibody   |
| Observed band           | 42  |
| Human Gene ID           | 1432  |
| Human Swiss-Prot Number | Q16539  |
| Background              | p38 MAP kinase (MAPK) is the mammalian orthologue of the yeast HOG kinase that participates in a signaling cascade controlling cellular responses to cytokines and stress. Isoforms p38 $\alpha$ , $\beta$ , $\gamma$ and $\delta$ have been identified. p38 MAPK is activated by a variety of cellular stresses including osmotic shock, inflammatory cytokines, lipopolysaccharide (LPS), UV light, and growth factors. |

Selected Validation Data



Immunohistochemical analysis of paraffin-embedded Human Lung Carcinoma Tissue using P38 Mouse mAb diluted at 1:200.