

HP-1 γ Mouse Monoclonal Antibody (4F4)

Catalog No: RA10201

Basic Information

Host species	Mouse
Applications	WB,IHC
Species Cross-Reactivity	H,R,M
Specificity	The Antibody can detects endogenous HP-1 γ proteins.
Recommended dilutions	WB: 1:1,000-2,000 IHC: 1:100-200 Optimal dilutions should be determined by the end user.

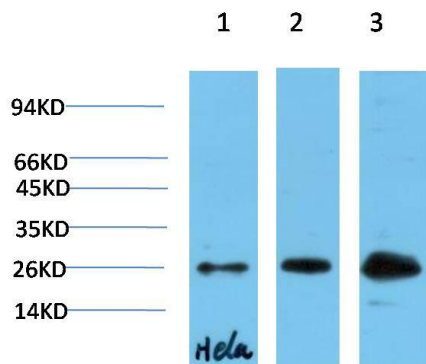
Applications

Formulation	PBS, pH 7.4, containing 0.02% sodium azide as Preservative and 50% Glycerol.
Storage	Store at -20°C. Avoid repeated freeze-thaw cycles.
Concentration	1 mg/ml
Clonality	Monoclonal

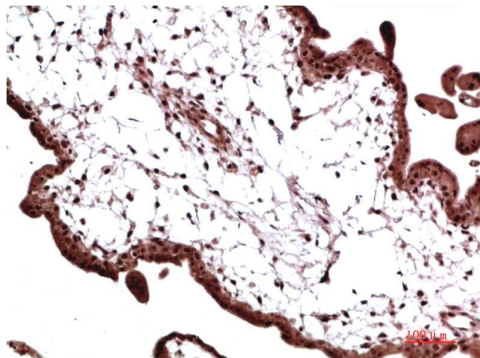
Background

Alternative Names	CBX3, Chromobox homolog 3, HECH, HP1 gamma
Observed band	24
Human Gene ID	11335
Human Swiss-Prot Number	Q13185
Background	Heterochromatin protein 1 (HP1) is a family of heterochromatic adaptor molecules involved in both gene silencing and higher order chromatin structure. All three HP1 family members (α , β , and γ) are primarily associated with centromeric heterochromatin.

Selected Validation Data



Western blot analysis of 1) Hela Cell Lysate, 2) 3T3 Cell Lysate, 3) PC12 Cell Lysate using HP-1 γ (TDY711) Mouse mAb diluted at 1:1000.



Immunohistochemical analysis of paraffin-embedded Human Placenta Tissue using HP-1 γ (TDY711) Mouse mAb diluted at 1:200.