

ATM Mouse Monoclonal Antibody(4C8)

Catalog No: RA10180

Basic Information

Host species	Mouse
Applications	IHC
Species Cross-Reactivity	H,R,M
Specificity	The antibody can detects endogenous ATM proteins.
Recommended dilutions	IHC: 1:100-200 Optimal dilutions should be determined by the end user.

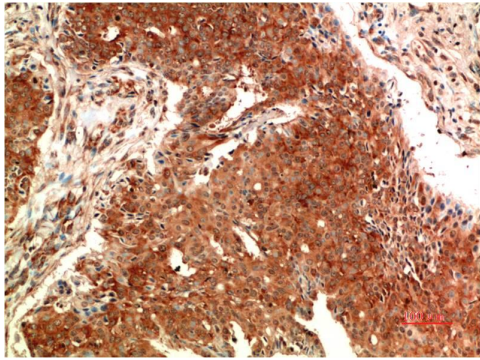
Applications

Formulation	PBS, pH 7.4, containing 0.02% sodium azide as Preservative and 50% Glycerol.
Storage	Store at -20°C. Avoid repeated freeze-thaw cycles.
Concentration	1 mg/ml
Clonality	Monoclonal

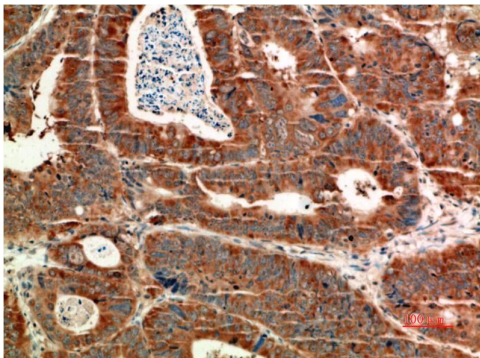
Background

Alternative Names	AT1,ATA,ATDC,TEL1,A-T mutated antibody
Observed band	370
Human Gene ID	472
Human Swiss-Prot Number	Q13315
Background	Ataxia telangiectasia mutated kinase (ATM) is a serine/threonine kinase that regulates cell cycle checkpoints and DNA repair. ATM kinase regulates a number of proteins involved in cell cycle checkpoint control, apoptosis, and DNA repair.

Selected Validation Data



Immunohistochemical analysis of paraffin-embedded Human Breast Carcinoma Tissue using ATM Mouse mAb diluted at 1:200.



Immunohistochemical analysis of paraffin-embedded Human Colon Carcinoma Tissue using ATM Mouse mAb diluted at 1:200.