

# TGF $\beta$ 1 Mouse Monoclonal Antibody(4B9)

## Catalog No: RA10171

### Basic Information

Host species	Mouse
Applications	WB,IHC
Species Cross-Reactivity	H,R,M
Specificity	Antibody can detects endogenous TGF $\beta$ 1 proteins.
Recommended dilutions	WB: 1:1,000-2,000      IHC: 1:100-200 Optimal dilutions should be determined by the end user.

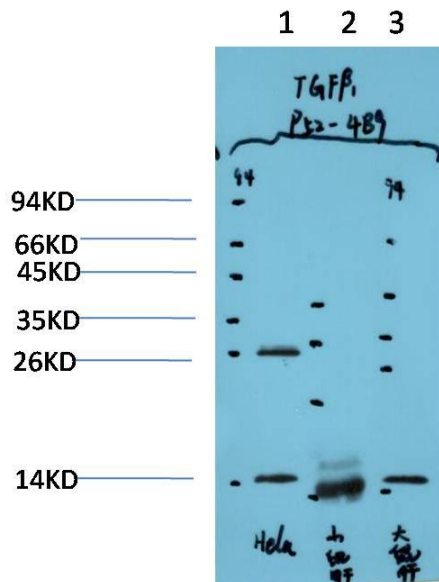
### Applications

Formulation	PBS, pH 7.4, containing 0.02% sodium azide as Preservative and 50% Glycerol.
Storage	Store at -20°C. Avoid repeated freeze-thaw cycles.
Concentration	1 mg/ml
Clonality	Monoclonal

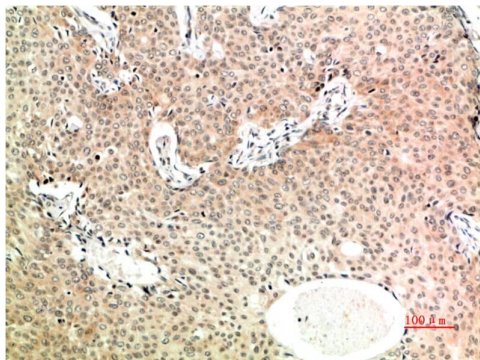
### Background

Alternative Names	TGF beta 1 antibody, TGFB antibody, CED antibody, LAP antibody
Observed band	12,25,45-65
Human Gene ID	7040
Human Swiss-Prot Number	P01137
Background	Transforming growth factor- $\beta$ (TGF- $\beta$ ) superfamily members are critical regulators of cell proliferation and differentiation, developmental patterning and morphogenesis, and disease pathogenesis. Many cells synthesize TGFB1 and have specific receptors for it. It positively and negatively regulates many other growth factors.

Selected Validation Data



Western blot analysis of 1) HeLa Cell Lysate, 2) Mouse Liver Tissue Lysate, 3) Rat Liver Tissue Lysate using TGFβ1 Mouse mAb diluted at 1:1000.



Immunohistochemical analysis of paraffin-embedded Human Breast Carcinoma Tissue using TGFβ1 Mouse mAb diluted at 1:200.