

MLKL(Phospho Ser358) Mouse Monoclonal Antibody(6F8)

Catalog No: RA10156

Basic Information

Host species	Mouse
Applications	IHC
Species Cross-Reactivity	H
Specificity	Antibody can detects endogenous Phospho ser358 MLKL protein.
Recommended dilutions	IHC: 1:100-200 Optimal dilutions should be determined by the end user.

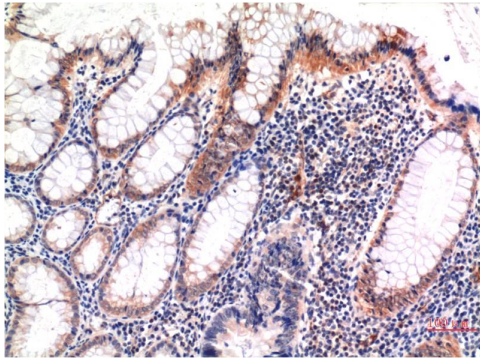
Applications

Formulation	PBS, pH 7.4, containing 0.02% sodium azide as Preservative and 50% Glycerol.
Storage	Store at -20°C. Avoid repeated freeze-thaw cycles.
Concentration	1 mg/ml
Clonality	Monoclonal

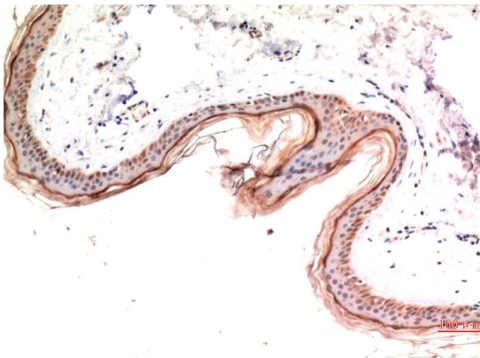
Background

Alternative Names	Mixed lineage kinase domain like protein, FLJ34389
Observed band	54
Human Gene ID	197259
Human Swiss-Prot Number	Q8NB16
Background	Mixed lineage kinase domain-like protein (MLKL) is a pseudokinase that was identified as downstream target of RIP3 in the necroptosis pathway. During necroptosis RIP3 is phosphorylated at Ser227, which recruits MLKL and leads to its phosphorylation at Thr357 and Ser358.

Selected Validation Data



Immunohistochemical analysis of paraffin-embedded Human Colon Carcinoma Tissue using Phospho-MLKL S358 Mouse mAb diluted at 1:200.



Immunohistochemical analysis of paraffin-embedded Human Skin Tissue using Phospho-MLKL S358 Mouse mAb diluted at 1:200.