

# Beclin-1 Mouse Monoclonal Antibody(5C5)

## Catalog No: RA10150

### Basic Information

|                          |   |
|--------------------------|---|
| Host species             | Mouse   |
| Applications             | IHC   |
| Species Cross-Reactivity | H,R,M   |
| Specificity              | Antibody can detects endogenous Beclin-1 protein.                         |
| Recommended dilutions    | IHC: 1:100-200<br>Optimal dilutions should be determined by the end user. |

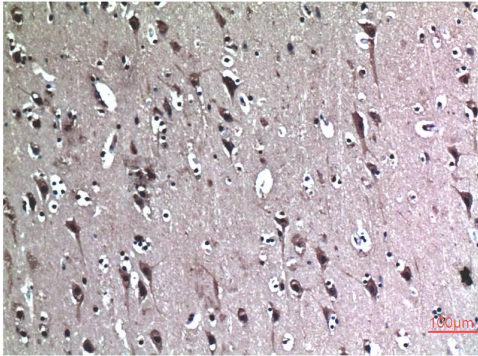
### Applications

|               |  |
|---------------|--|
| Formulation   | PBS, pH 7.4, containing 0.02% sodium azide as Preservative and 50% Glycerol. |
| Storage       | Store at -20°C. Avoid repeated freeze-thaw cycles.                           |
| Concentration | 1 mg/ml  |
| Clonality     | Monoclonal   |

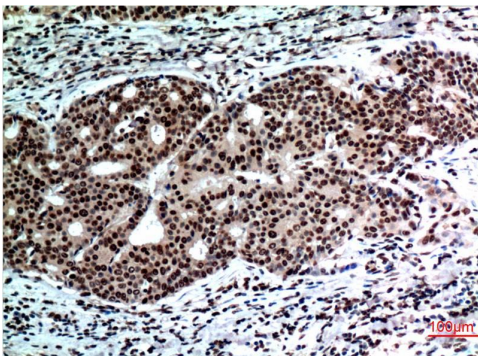
### Background

|                         |  |
|-------------------------|--|
| Alternative Names       | ATG6, Bcl-2 interacting protein beclin, BECN1, Coiled coil myosin like BCL2 interacting protein  |
| Observed band           | 60   |
| Human Gene ID           | 8678   |
| Human Swiss-Prot Number | Q14457   |
| Background              | Autophagy is a catabolic process for the autophagosomic-lysosomal degradation of proteins activated in response to nutrient deprivation and in neurodegenerative conditions. One of the proteins critical to this process is Beclin-1. |

## Selected Validation Data



Immunohistochemical analysis of paraffin-embedded Human Brain Tissue using Beclin-1 Mouse mAb diluted at 1:200.



Immunohistochemical analysis of paraffin-embedded Human Breast Carcinoma Tissue using Beclin-1 Mouse mAb diluted at 1:200.