

Luciferase Mouse Monoclonal Antibody(7C9)

Catalog No: RA10143

Basic Information

Host species	Mouse
Applications	WB
Species Cross-Reactivity	Firefly
Specificity	The Luciferase antibody can detects endogenous and recombinant Luciferase protein.
Recommended dilutions	WB: 1:1,000-2,000 Optimal dilutions should be determined by the end user.

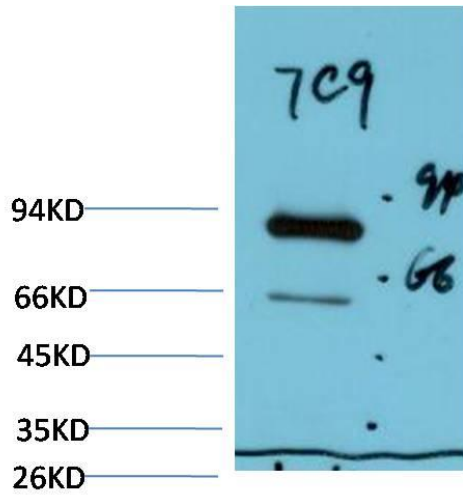
Applications

Formulation	PBS, pH 7.4, containing 0.02% sodium azide as Preservative and 50% Glycerol.
Storage	Store at -20°C. Avoid repeated freeze-thaw cycles.
Concentration	1 mg/ml
Clonality	Monoclonal

Background

Alternative Names	
Observed band	60
Human Gene ID	
Human Swiss-Prot Number	P08659
Background	

Selected Validation Data



Western blot analysis of Firefly Luciferase Transfected Hela Cell Lysate using Luciferase (TDY625) Mouse mAb diluted at 1:2000.