

Epsilon Tubulin Mouse Monoclonal Antibody(2B3)

Catalog No: RA10140

Basic Information

Host species	Mouse
Applications	WB
Species Cross-Reactivity	H,R,M
Specificity	The epsilon tubulin antibody can detects endogenous epsilon tubulin protein.
Recommended dilutions	WB: 1:1,000-2,000 Optimal dilutions should be determined by the end user.

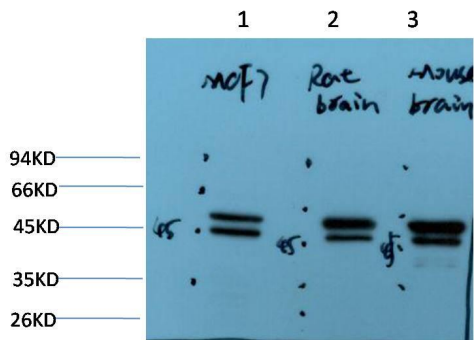
Applications

Formulation	PBS, pH 7.4, containing 0.02% sodium azide as Preservative and 50% Glycerol.
Storage	Store at -20°C. Avoid repeated freeze-thaw cycles.
Concentration	1 mg/ml
Clonality	Monoclonal

Background

Alternative Names	FLJ22589,TUBE1,tubulin epsilon 1, ε tubulin
Observed band	55
Human Gene ID	51175
Human Swiss-Prot Number	Q9UJT0
Background	

Selected Validation Data



Western blot analysis of 1) MCF7Cell Lysate, 2) Rat Brain Tissue Lysate, 3) Mouse Brain Tissue Lysate using Epsilon Tubulin Mouse mAb diluted at 1:2000.