

Epsilon Tubulin Mouse Monoclonal Antibody(3G1)

Catalog No: RA10132

Basic Information

Host species	Mouse
Applications	IHC
Species Cross-Reactivity	H,R,M
Specificity	The epsilon tubulin antibody can detects endogenous epsilon tubulin protein.
Recommended dilutions	IHC: 1:100-200 Optimal dilutions should be determined by the end user.

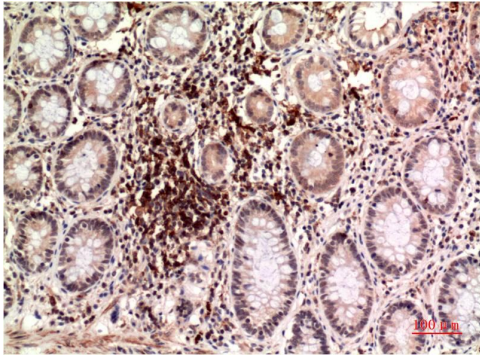
Applications

Formulation	PBS, pH 7.4, containing 0.02% sodium azide as Preservative and 50% Glycerol.
Storage	Store at -20°C. Avoid repeated freeze-thaw cycles.
Concentration	1 mg/ml
Clonality	Monoclonal

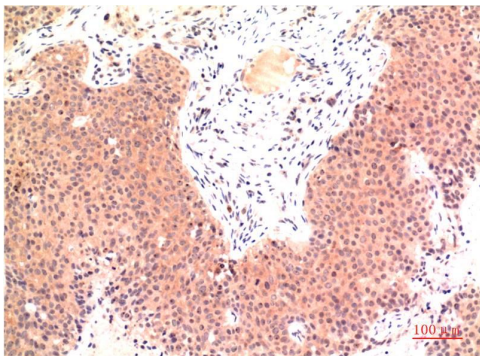
Background

Alternative Names	FLJ22589,TUBE1,tubulin epsilon 1, ε tubulin
Observed band	55
Human Gene ID	51175
Human Swiss-Prot Number	Q9UJT0
Background	

Selected Validation Data



Immunohistochemical analysis of paraffin-embedded Human Colon Carcinoma Tissue using Epsilon Tubulin (TDY613) Mouse mAb diluted at 1:200.



Immunohistochemical analysis of paraffin-embedded Human Breast Carcinoma Tissue using Epsilon Tubulin (TDY613) Mouse mAb diluted at 1:200.