

# GSK 3 $\beta$ Mouse Monoclonal Antibody(1A6)

## Catalog No: RA10120

### Basic Information

Host species	Mouse
Applications	WB,IHC
Species Cross-Reactivity	H,R,M
Specificity	Antibody can detects endogenous GSK 3 $\beta$ protein.
Recommended dilutions	WB: 1:1,000-2,000    IHC: 1:100-200 Optimal dilutions should be determined by the end user.

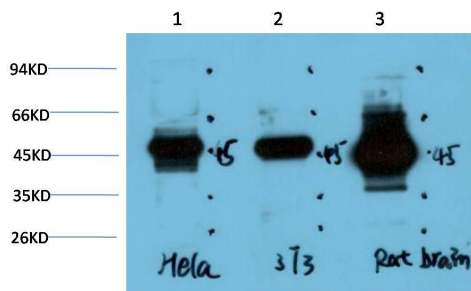
### Applications

Formulation	PBS, pH 7.4, containing 0.02% sodium azide as Preservative and 50% Glycerol.
Storage	Store at -20°C. Avoid repeated freeze-thaw cycles.
Concentration	1 mg/ml
Clonality	Monoclonal

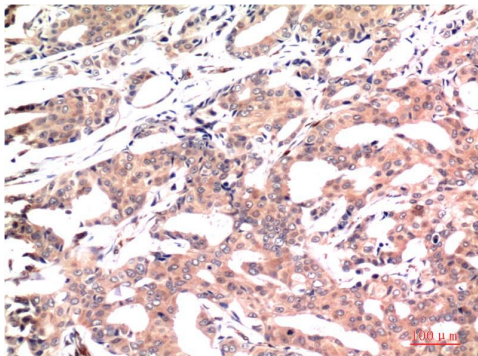
### Background

Alternative Names	Glycogen synthase kinase 3 beta antibody, GSK3B antibody, Serine/threonine protein kinase GSK3B antibody
Observed band	46
Human Gene ID	2932
Human Swiss-Prot Number	P49841
Background	Glycogen synthase kinase 3 beta, also known as GSK3B, is an enzyme that in humans is encoded by the GSK3B gene.

## Selected Validation Data



Western blot analysis of 1) HeLa Cell Lysate, 2) 3T3 Cell Lysate, 3) Rat Brain Tissue Lysate using GSK3 $\beta$  (TDY601) Mouse mAb diluted at 1:1000.



Immunohistochemical analysis of paraffin-embedded Human Breast Carcinoma Tissue using GSK3 $\beta$  (TDY601) Mouse mAb diluted at 1:200.