

Cystatin C Mouse Monoclonal Antibody(7F11)

Catalog No: RA10114

Basic Information

Host species	Mouse
Applications	WB,IHC,ELISA
Species Cross-Reactivity	H
Specificity	Antibody can detects endogenous Cystatin C protein.
Recommended dilutions	WB: 1:1,000-2,000 IHC: 1:100-200 ELISA: 1:10,000-20,000 Optimal dilutions should be determined by the end user.

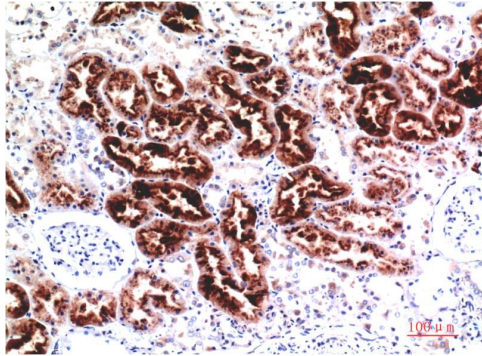
Applications

Formulation	PBS, pH 7.4, containing 0.02% sodium azide as Preservative and 50% Glycerol.
Storage	Store at -20°C. Avoid repeated freeze-thaw cycles.
Concentration	1 mg/ml
Clonality	Monoclonal

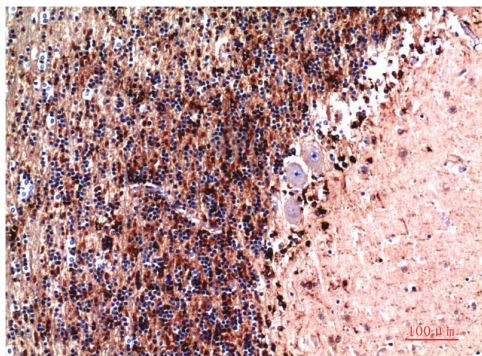
Background

	AD8, Cystatin3, Gamma trace, HCCAA
Alternative Names	/ _x0007_ _x0007_ _x0007_Immunohistochemical analysis of paraffin-embedded Human Kidney Tissue using Cystatin C (TDY594) Mouse mAb diluted at 1:200. _x0007_Immunohistochemical analysis of paraffin-embedded Human Brain Tissue using Cystatin C
Observed band	14
Human Gene ID	1471
Human Swiss-Prot Number	P01034
Background	

Selected Validation Data



Immunohistochemical analysis of paraffin-embedded Human Kidney Tissue using Cystatin C Mouse mAb diluted at 1:200.



Immunohistochemical analysis of paraffin-embedded Human Brain Tissue using Cystatin C Mouse mAb diluted at 1:200.