

STAT1 Mouse Monoclonal Antibody(5H7)

Catalog No: RA10101

Basic Information

| | |
|--------------------------|---|
| Host species | Mouse |
| Applications | IHC |
| Species Cross-Reactivity | H,R,M |
| Specificity | Antibody can detects endogenous STAT1 protein. |
| Recommended dilutions | IHC: 1:100-200 Optimal dilutions should be determined by the end user. |

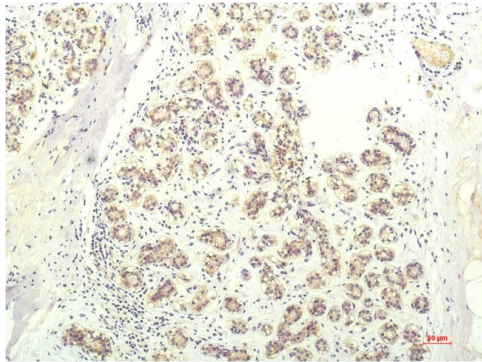
Applications

| | |
|---------------|--|
| Formulation | PBS, pH 7.4, containing 0.02% sodium azide as Preservative and 50% Glycerol. |
| Storage | Store at -20°C. Avoid repeated freeze-thaw cycles. |
| Concentration | 1 mg/ml |
| Clonality | Monoclonal |

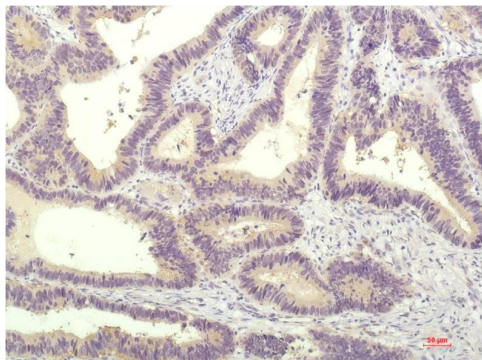
Background

| | |
|-------------------------|--|
| Alternative Names | CANDF7 antibody, ISGF3 antibody, DKFZp686B04100 antibody |
| Observed band | 84,91 |
| Human Gene ID | 6772 |
| Human Swiss-Prot Number | P42224 |
| Background | STAT1 is a member of the Signal Transducers and Activators of Transcription family of transcription factors. STAT1 is involved in upregulating genes due to a signal by either type I, type II, or type III interferons. |

Selected Validation Data



Immunohistochemical analysis of paraffin-embedded Human Breast Carcinoma Tissue using STAT1 Mouse mAb diluted at 1:200.



Immunohistochemical analysis of paraffin-embedded Human Colon Carcinoma Tissue using STAT1 Mouse mAb diluted at 1:200.