

Galectin-3 Mouse Monoclonal Antibody(8D7)

Catalog No: RA10066

Basic Information

Host species	Mouse
Applications	WB,IHC,ELISA
Species Cross-Reactivity	H
Specificity	Antibody can detects endogenous Human Galectin-3 protein.
Recommended dilutions	WB: 1:1,000-2,000 IHC: 1:100-200 ELISA:1:100,00-50,000 Optimal dilutions should be determined by the end user.

Applications

Formulation	PBS, pH 7.4, containing 0.02% sodium azide as Preservative and 50% Glycerol.
Storage	Store at -20°C. Avoid repeated freeze-thaw cycles.
Concentration	1 mg/ml
Clonality	Monoclonal

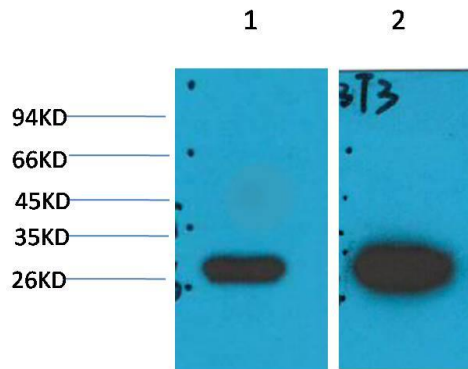
Background

Alternative Names	35KD lectin, CBP35,GBP,IgE-binding protein, L31,Laminin binding protein,Lectin L29
Observed band	26
Human Gene ID	3958
Human Swiss-Prot Number	P17931

Background

Galectin 3 is one of the more extensively studied members of this family and is a 30 kDa protein. Due to a C-terminal carbohydrate binding site, Galectin 3 is capable of binding IgE and mammalian cell surfaces only when homodimerized or homooligomerized. Galectin 3 is normally distributed in epithelia of many organs, in various inflammatory cells, including macrophages, as well as dendritic cells and Kupffer cells. The expression of this lectin is up-regulated during inflammation, cell proliferation, cell differentiation and through trans-activation by viral proteins.

Selected Validation Data



Western blot analysis of 1)MCF7, 2) 3T3 with Galectin-3 Mouse mAb diluted at 1:2,000.