

# CaMKII $\beta$ $\gamma$ $\delta$ (Phospho Thr287) Mouse Monoclonal Antibody(1B9)

## Catalog No: RA10058

### Basic Information

Host species	Mouse
Applications	IHC
Species Cross-Reactivity	H,R,M
Specificity	Antibody can detects endogenous CaMKII $\beta/\gamma/\delta$ (Phospho Thr287) protein.
Recommended dilutions	IHC: 1:100-200 Optimal dilutions should be determined by the end user.

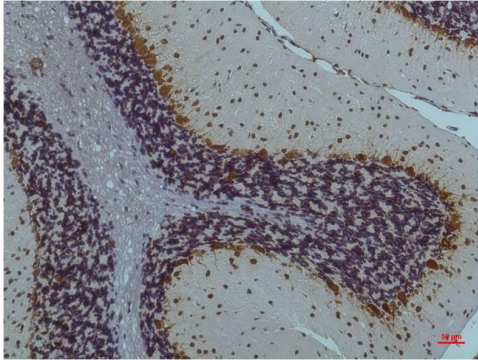
### Applications

Formulation	PBS, pH 7.4, containing 0.02% sodium azide as Preservative and 50% Glycerol.
Storage	Store at -20°C. Avoid repeated freeze-thaw cycles.
Concentration	1 mg/ml
Clonality	Monoclonal

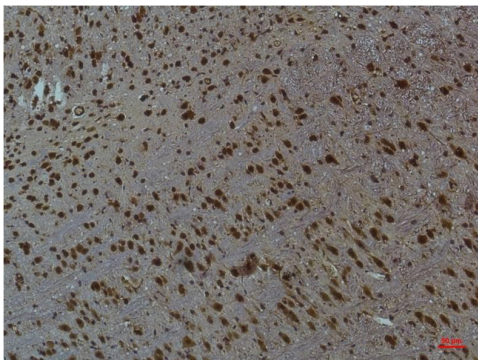
### Background

Alternative Names	Calcium/calmodulin dependent protein kinase II,KCC2A
Observed band	50
Human Gene ID	
Human Swiss-Prot Number	Q13554/Q13555/Q13557
Background	CaMKII is an important member of the calcium/calmodulin-activated protein kinase family, functioning in neural synaptic stimulation and T-cell receptor signaling. CaMKII has catalytic and regulatory domains.

## Selected Validation Data



Immunohistochemical analysis of paraffin-embedded Rat Brain Tissue using CaMKIIβ/ γ /δ (Phospho Thr287) Mouse mAb diluted at 1:200.



Immunohistochemical analysis of paraffin-embedded Mouse Brain Tissue using CaMKIIβ/ γ /δ (Phospho Thr287) Mouse mAb diluted at 1:200.