

Cyclophilin B Mouse Monoclonal Antibody(1B3)

Catalog No: RA10048

Basic Information

Host species	Mouse
Applications	WB,IHC
Species Cross-Reactivity	H,R,M
Specificity	Antibody can detects endogenous Cyclophilin B protein.
Recommended dilutions	WB: 1:1,000-2,000 IHC: 1:100-200 Optimal dilutions should be determined by the end user.

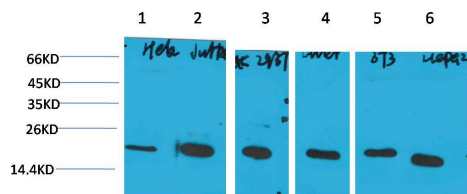
Applications

Formulation	PBS, pH 7.4, containing 0.02% sodium azide as Preservative and 50% Glycerol.
Storage	Store at -20°C. Avoid repeated freeze-thaw cycles.
Concentration	1 mg/ml
Clonality	Monoclonal

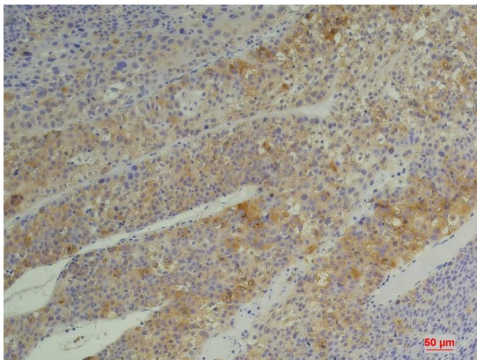
Background

Alternative Names	Cphn2, MGC2224, Rotamase, S cyclophilin, CYPB, CyP-S1, Rotamase B
Observed band	21
Human Gene ID	5479
Human Swiss-Prot Number	P23284
Background	Cyclophilin B (CyPB) is an ER-localized chaperone protein belonging to the family of peptidyl-prolyl cis-trans isomerases.

Selected Validation Data



Western blot analysis of 1) HeLa, 2) Jurkat, 3) 293T, 4) Rat Liver Tissue, 5) 3T3, 6) HepG2 with Cyclophilin B Mouse mAb diluted at 1:2,000.



Immunohistochemical analysis of paraffin-embedded Human Hepatocarcinoma using Cyclophilin B Mouse mAb diluted at 1:200.