

# Desmin Mouse Monoclonal Antibody(1B12)

## Catalog No: RA10047

### Basic Information

Host species	Mouse
Applications	IHC
Species Cross-Reactivity	H,R,M
Specificity	Antibody can detects endogenous Desmin protein.
Recommended dilutions	IHC: 1:100-200 Optimal dilutions should be determined by the end user.

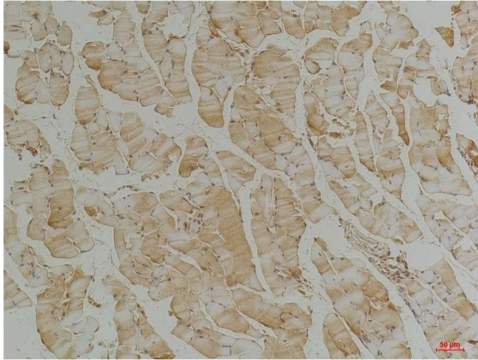
### Applications

Formulation	PBS, pH 7.4, containing 0.02% sodium azide as Preservative and 50% Glycerol.
Storage	Store at -20°C. Avoid repeated freeze-thaw cycles.
Concentration	1 mg/ml
Clonality	Monoclonal

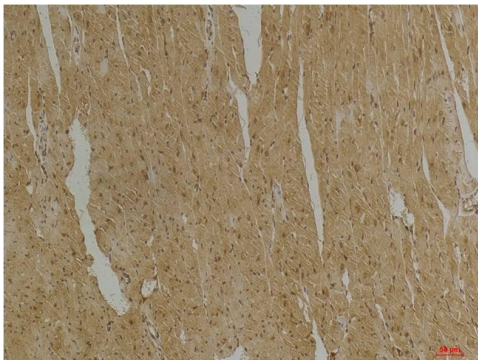
### Background

Alternative Names	CMD11, CSM1,CSM2, DES, FLJ12025
Observed band	53
Human Gene ID	1674
Human Swiss-Prot Number	P17661
Background	Desmin is a myogenic marker expressed in early development that forms a network of filaments that extends across the myofibril and surrounds Z discs. The desmin cytoskeleton provides a connection among myofibrils, organelles and the cytoskeleton.

## Selected Validation Data



Immunohistochemical analysis of paraffin-embedded Mouse Skeletal Muscle Tissue using Desmin Mouse mAb diluted at 1:200.



Immunohistochemical analysis of paraffin-embedded Mouse Heart Tissue using Desmin Mouse mAb diluted at 1:200.