

Active Caspase 3 Mouse Monoclonal Antibody(5E1)

Catalog No: RA10026

Basic Information

Host species	Mouse
Applications	WB, IHC
Species Cross-Reactivity	H, R, M
Specificity	Antibody can detects endogenous Active Caspase 3 protein.
Recommended dilutions	WB: 1:500-1,000 IHC: 1:100-200 Optimal dilutions should be determined by the end user.

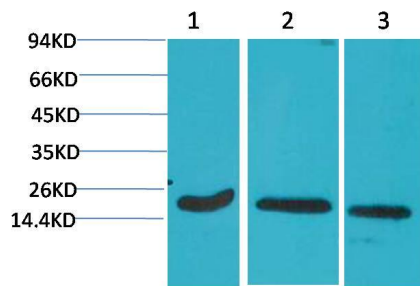
Applications

Formulation	PBS, pH 7.4, containing 0.02% sodium azide as Preservative and 50% Glycerol.
Storage	Store at -20°C. Avoid repeated freeze-thaw cycles.
Concentration	1 mg/ml
Clonality	Monoclonal

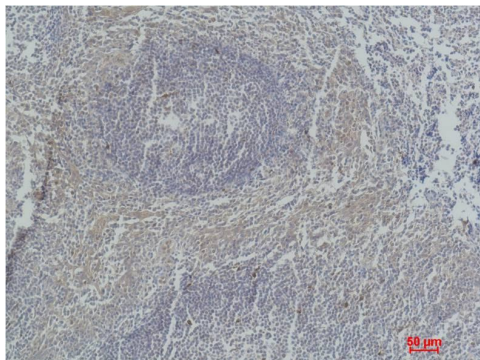
Background

Alternative Names	APOPAIN antibody, CASP 3 antibody, CPP32 antibody, Cysteine protease CPP32 antibody
Observed band	17
Human Gene ID	836
Human Swiss-Prot Number	P42574
Background	Activation of caspase-3 requires proteolytic processing of its inactive zymogen into activated p17 and p12 fragments. Cleavage of caspase-3 requires aspartic acid at the P1 position.

Selected Validation Data



Western blot analysis of 1) HeLa, 2)3T3, 3)Rat Brain Tissue with Active Caspase 3 Mouse mAb diluted at 1:1,000.



Immunohistochemical analysis of paraffin-embedded Human Tonsil Tissue using Active Caspase 3 Mouse mAb diluted at 1:200.