

CBARA1 MICU1 Mouse Monoclonal Antibody(Mix-mA)

Catalog No: RA10025

Basic Information

Host species	Mouse
Applications	WB, IHC
Species Cross-Reactivity	H, R, M
Specificity	Antibody can detects endogenous CBARA1 protein.
Recommended dilutions	WB: 1:1,000-2,000 IHC: 1:100-200 Optimal dilutions should be determined by the end user.

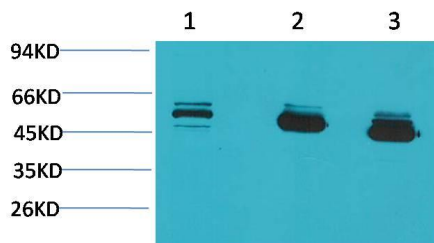
Applications

Formulation	PBS, pH 7.4, containing 0.02% sodium azide as Preservative and 50% Glycerol.
Storage	Store at -20°C. Avoid repeated freeze-thaw cycles.
Concentration	1 mg/ml
Clonality	Monoclonal

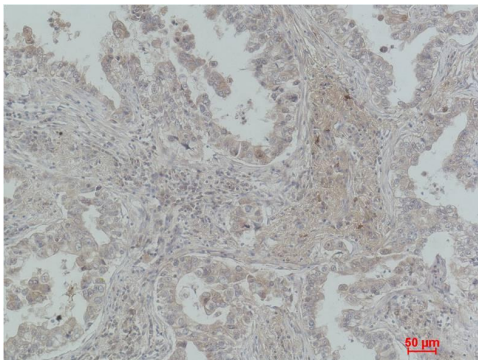
Background

Alternative Names	ara CALC antibody, Allergen Hom s4 antibody, MICU1 antibody, EFHA3 antibody, FLJ12684 antibody
Observed band	55
Human Gene ID	10367
Human Swiss-Prot Number	Q9BPX6
Background	CBARA1/MICU1 is a mitochondrial protein associated to the mitochondrial inner membrane that is comprised of two EF hand helix-loop-helix motifs. Key regulator of mitochondrial calcium uptake required for calcium entry into mitochondrion.

Selected Validation Data



Western blot analysis of 1) MCF7, 2) Mouse Brain Tissue, 3) Rat Brain Tissue with CBARA1/MICU1 Mouse mAb diluted at 1:2,000.



Immunohistochemical analysis of paraffin-embedded Human Lung Carcinoma using CBARA1/MICU1 Mouse mAb diluted at 1:200.