

# $\beta$ -Catenin Mouse Monoclonal Antibody(4F2)

## Catalog No: RA10022

### Basic Information

Host species	Mouse
Applications	WB, IHC
Species Cross-Reactivity	H, R, M
Specificity	The $\beta$ -Catenin Mouse Monoclonal antibody detects endogenous $\beta$ -Catenin proteins.
Recommended dilutions	WB: 1:1,000-2,000      IHC: 1:200-500 Optimal dilutions should be determined by the end user.

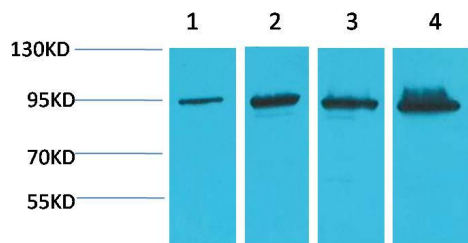
### Applications

Formulation	PBS, pH 7.4, containing 0.02% sodium azide as Preservative and 50% Glycerol.
Storage	Store at -20°C. Avoid repeated freeze-thaw cycles.
Concentration	1 mg/ml
Clonality	Monoclonal

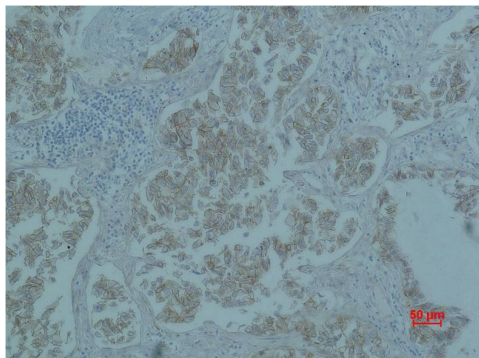
### Background

Alternative Names	beta catenin, b-catenin, CTNB1, CTNNB1, FLJ25606, OTTHUMP00000162082
Observed band	92
Human Gene ID	1499
Human Swiss-Prot Number	P35222
Background	The distinct peripheral cytosolic proteins, alpha, beta and gamma catenin (102, 94 and 86 kDa) are found in many tissues and bind to the conserved cytoplasmic tail domain of the cell adhesion cadherins. Catenins link E cadherin to other integral membrane or cytoplasmic proteins and are modulated by Wnt1 proto oncogene. The central core region of beta catenin is involved in mediation of cadherin catenin complex interaction with EGFR. Beta-Catenin-mediated signalling is involved at several stages of vertebrate neural development.

## Selected Validation Data



Western blot analysis of 1) Hela, 2) 293T, 3) Mouse Liver Tissue, 4) Rat Liver Tissue, with  $\beta$ -Catenin Mouse mAb diluted at 1:2,000.



Immunohistochemical analysis of paraffin-embedded Human Lung carcinoma using  $\beta$ -Catenin Mouse mAb diluted at 1:500.