

Caspase 8 Mouse Monoclonal Antibody(2G12)

Catalog No: RA10018

Basic Information

Host species	Mouse
Applications	WB, IHC
Species Cross-Reactivity	H, R, M
Specificity	Antibody can detects endogenous Caspase 8 protein.
Recommended dilutions	WB: 1:1,000-2,000 IHC:1:200-500 Optimal dilutions should be determined by the end user.

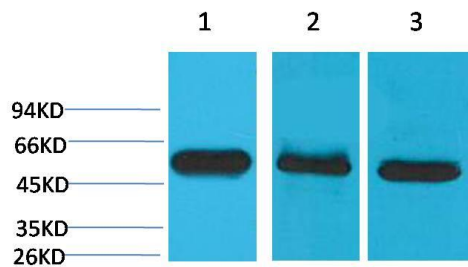
Applications

Formulation	PBS, pH 7.4, containing 0.02% sodium azide as Preservative and 50% Glycerol.
Storage	Store at -20°C. Avoid repeated freeze-thaw cycles.
Concentration	1 mg/ml
Clonality	Monoclonal

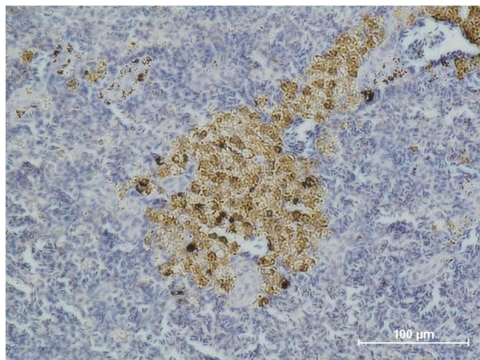
Background

Alternative Names	ALPS2B antibody, Apoptosis cysteine protease antibody, CAP4 antibody, CED3 antibody, MCH5 antibody
Observed band	43,57
Human Gene ID	841
Human Swiss-Prot Number	Q14790
Background	Caspase-8 is a caspase protein, encoded by the CASP8 gene. It most likely acts upon caspase-3. Activated caspase-8 cleaves and activates downstream effector caspases such as caspase-1, -3, -6, and -7.

Selected Validation Data



Western blot analysis of 1) Hela, 2) Mouse Brain Tissue, 3) Rat Brain Tissue with Caspase 8 Mouse mAb diluted at 1:2,000.



Immunohistochemical analysis of paraffin-embedded Mouse Spleen Tissue using Caspase8 Mouse mAb diluted at 1:500.