

# eNOS Mouse Monoclonal Antibody(Mix-mA)

## Catalog No: RA10013

### Basic Information

Host species	Mouse
Applications	WB, IHC
Species Cross-Reactivity	H, R, M
Specificity	The eNOS antibody can detects endogenous eNOS protein.
Recommended dilutions	WB: 1:500-2,000      IHC:1:200-500 Optimal dilutions should be determined by the end user.

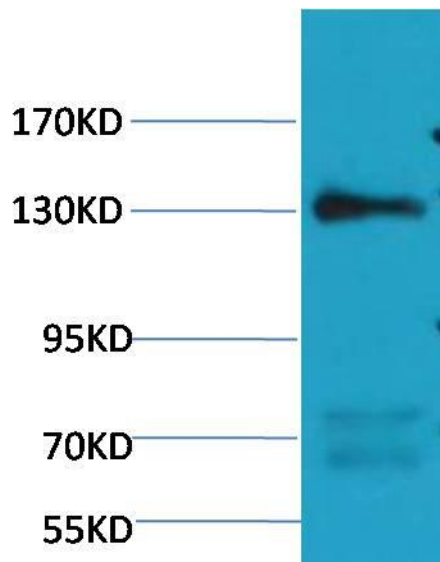
### Applications

Formulation	PBS, pH 7.4, containing 0.02% sodium azide as Preservative and 50% Glycerol.
Storage	Store at -20°C. Avoid repeated freeze-thaw cycles.
Concentration	1 mg/ml
Clonality	Monoclonal

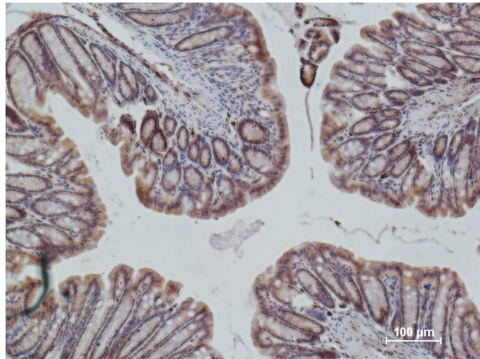
### Background

Alternative Names	endothelial nitric oxidase synthase antibody, NOS 3 antibody, NOS III antibody, EC-NOS antibody
Observed band	130
Human Gene ID	4846
Human Swiss-Prot Number	P29474
Background	Nitric oxide synthases (EC 1.14.13.39) (NOSs) are a family of enzymes catalyzing the production of nitric oxide (NO) from L-arginine. NO is an important cellular signaling molecule. Endothelial NOS (eNOS), also known as nitric oxide synthase 3 (NOS3), generates NO in blood vessels and is involved with regulating vascular function.

Selected Validation Data



Western blot analysis of Rat Heart Tissue with eNOS (Mix-mA™) Mouse mAb diluted at 1:1,000.



Immunohistochemical analysis of paraffin-embedded Mouse Colon Tissue using eNOS Mouse mAb diluted at 1:500.