

Histone H2B Mouse Monoclonal Antibody(Mix-mA)

Catalog No: RA10012

Basic Information

Host species	Mouse
Applications	WB, IHC
Species Cross-Reactivity	H, R, M
Specificity	The Histone H2B antibody can detects endogenous Histone H2B protein.
Recommended dilutions	WB: 1:1,000-3,000 IHC: 1:200-500 Optimal dilutions should be determined by the end user.

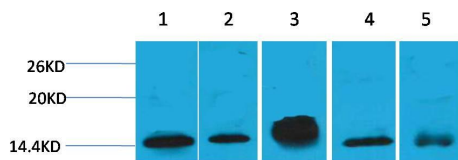
Applications

Formulation	PBS, pH 7.4, containing 0.02% sodium azide as Preservative and 50% Glycerol.
Storage	Store at -20°C. Avoid repeated freeze-thaw cycles.
Concentration	1 mg/ml
Clonality	Monoclonal

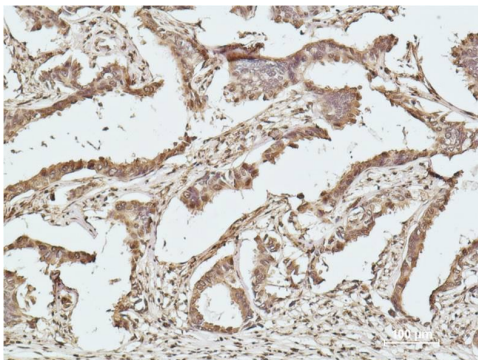
Background

Alternative Names	H2B GL105 antibody, H2B.1 antibody, Histone H2B type 1B antibody, HIST1H2BB antibody
Observed band	14
Human Gene ID	8349
Human Swiss-Prot Number	P33778
Background	Histone H2B is one of the 5 main histone proteins involved in the structure of chromatin in eukaryotic cells.

Selected Validation Data



Western blot analysis of 1) Hela, 2)3T3 , 3) Raw264.7, 4) Rat Brain, 5) Rat Kidney with Histone H2B(Mix-mA[™]) Mouse mAb diluted at 1:2,000.



Immunohistochemical analysis of paraffin-embedded human breast carcinoma using Histone H2B Mouse mAb diluted at 1:500.