

# Flotillin-1 Mouse Monoclonal Antibody(6C10)

## Catalog No: RA10006

### Basic Information

Host species	Mouse
Applications	WB
Species Cross-Reactivity	R, M
Specificity	Antibody can detects endogenous Flotillin-1 protein.
Recommended dilutions	WB: 1:1,000-2,000 Optimal dilutions should be determined by the end user.

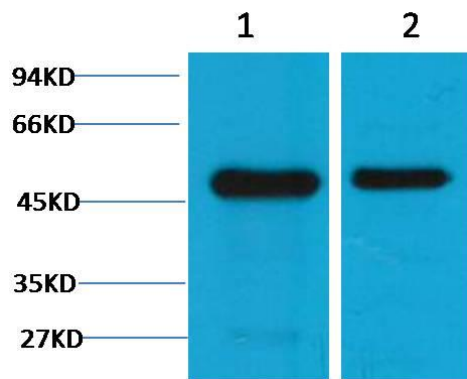
### Applications

Formulation	PBS, pH 7.4, containing 0.02% sodium azide as Preservative and 50% Glycerol.
Storage	Store at -20°C. Avoid repeated freeze-thaw cycles.
Concentration	1 mg/ml
Clonality	Monoclonal

### Background

Alternative Names	FLOT 1 antibody, Integral membrane component of caveolae antibody, Reggie 2 antibody
Observed band	49
Human Gene ID	10211
Human Swiss-Prot Number	O75955
Background	Two flotillin members have been described, flotillin-1 and flotillin-2. May act as a scaffolding protein within caveolar membranes, functionally participating in formation of caveolae or caveolae-like vesicles.

## Selected Validation Data



Western blot analysis of 1) Mouse Brain Tissue , 2) Rat Brain tissue with Flotillin-1 Mouse Monoclonal Antibody diluted at 1:2,000.