

# $\alpha$ skeletal muscle actin Mouse Monoclonal Antibody(4B11)

## Catalog No: RA10001

### Basic Information

Host species	Mouse
Applications	WB, IP, IHC
Species Cross-Reactivity	H, R, M
Specificity	Antibody can detects endogenous $\alpha$ Skeletal Muscle Actin protein.
Recommended dilutions	WB: 1:5,000-10,000      IP:1:200      IHC: 1:200-500 Optimal dilutions should be determined by the end user.

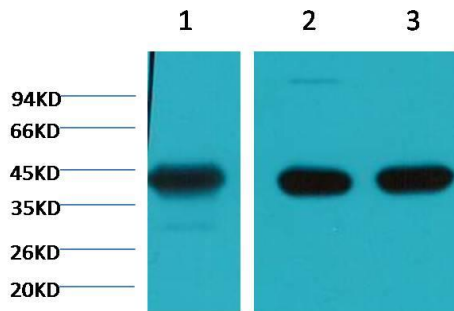
### Applications

Formulation	PBS, pH 7.4, containing 0.02% sodium azide as Preservative and 50% Glycerol.
Storage	Store at -20°C. Avoid repeated freeze-thaw cycles.
Concentration	1 mg/ml
Clonality	Monoclonal

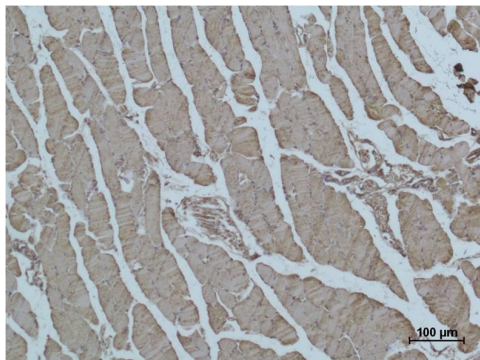
### Background

Alternative Names	ACTA antibody, ACTA1 antibody, ACTC antibody, ACTC1 antibody, Actin alpha cardiac muscle antibody, ACTS antibody, Alpha actin 1 antibody, Cardiac muscle alpha actin 1 antibody, Skeletal muscle alpha actin 1 antibody
Observed band	42
Human Gene ID	58
Human Swiss-Prot Number	P68133
Background	Actin, alpha skeletal muscle is a protein that in humans is encoded by the ACTA1 gene. Actin alpha 1 which is expressed in skeletal muscle is one of six different actin isoforms which have been identified. Actins are highly conserved proteins that are involved in cell motility, structure and integrity. Alpha actins are a major constituent of the contractile apparatus.

## Selected Validation Data



Western blot analysis of 1) Hela, 2) Mouse Brain tissue, 3) Rat Brain tissue with  $\alpha$  skeletal muscle actin Mouse Monoclonal Antibody diluted at 1:20,000.



Immunohistochemical analysis of paraffin-embedded Mouse Skeletal Muscle Tissue using  $\alpha$  skeletal muscle actin  $\alpha$  skeletal muscle actin Mouse Monoclonal Antibody diluted at 1:500.