

ELISA

2026 Reed Biotech ELISA Brochure

Reed Biotech Ltd is a high-tech biological company,
focusing on the field of biological immune protein
research.



Development



Innovation



Search



Sales

www.reedbiotech.com



Reed Biotech Ltd

TEL:+86 027-6531-6809

Web:www.reedbiotech.com

E-mail:info@reedbiotech.com

Address:Building B3-3, Biolake, No.666 Gaoxin Avonuc, Bast Lake
High-tech Zone, Wuhan,PRC

ABOUT US

Reed Biotech Ltd is a high-tech biological company

Reed Biotech as your biological research partner, we offer 3000+ ELISA test kits, primarily in sandwich ELISA format, covering species such as human, mouse, rat, and bovine...

As well as an accurate research tool for the detection and quantification of targets of interest in cultures and samples. ELISA kits are used in a variety of important research fields, including Cell Biology, Immunology, Cardiovascular, Metabolism, Cancer & Oncology, Neuroscience, Stem Cell, Signal Transduction and so on.

Reed Biotech maintains the strictest quality control system to ensure that every ELISA kit is free of flaws, allowing you to obtain accurate data in your experiments.



Qualification Certificate



- 2025 Reed Biotech-ISO 9001
- 2025 National High-tech Enterprise
- 2024 CE Certificate
- 2024 Patent For Invention, etc.

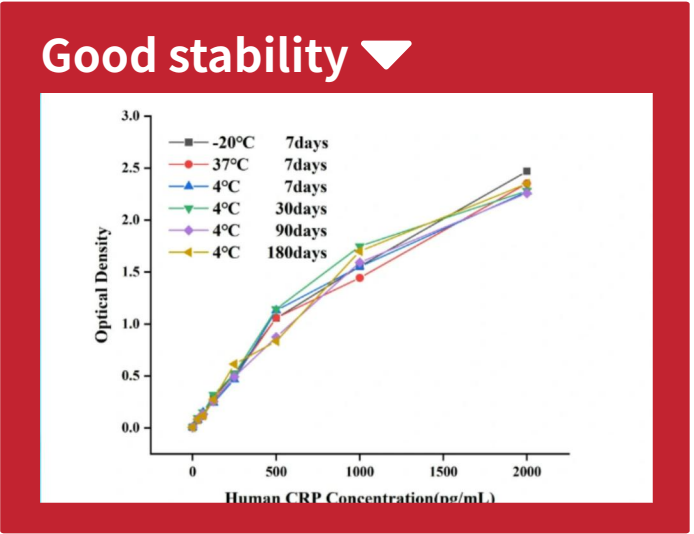
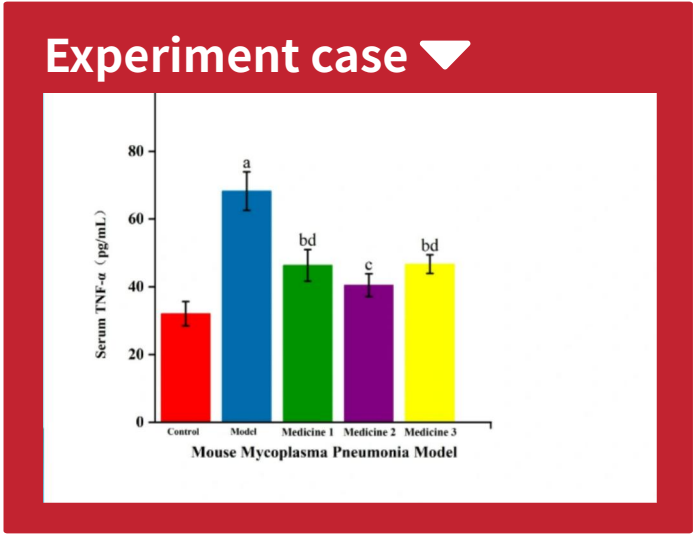
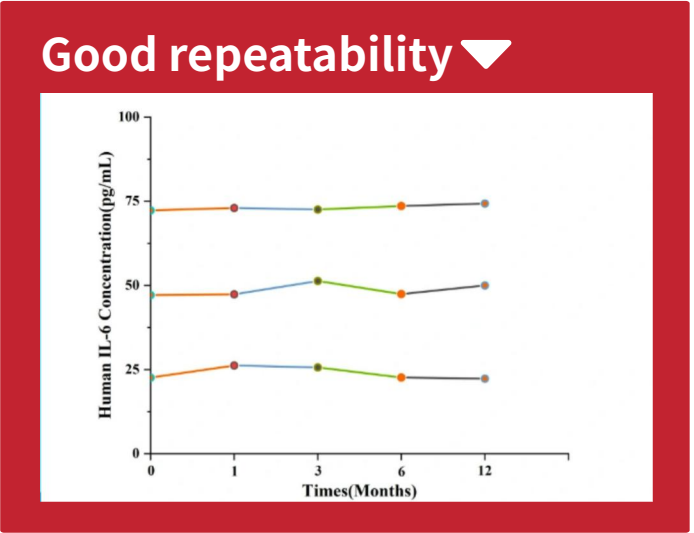
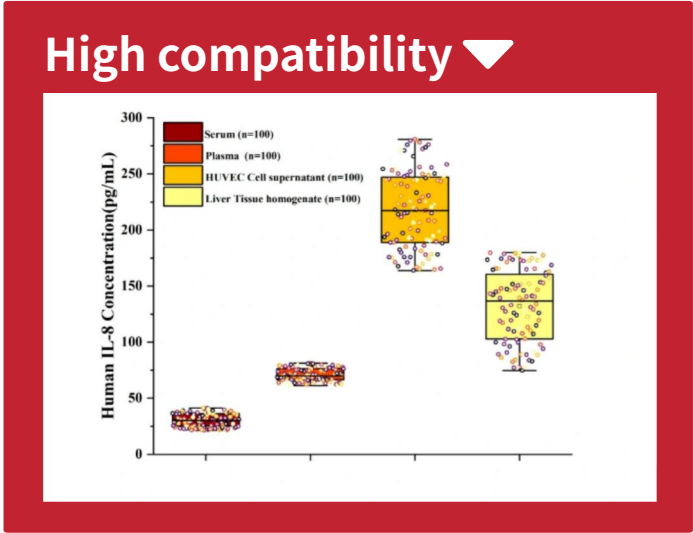
ELISA kits

Products Superiority



Strong reference support. Some products are taken as gold standards in biomedicine.

- High Sensitivity, Great Specificity, Small Lot difference
- Products for Human, Rat, Mouse and Other Species
- Easy Operation, Flexible Experiment.
- Wide range, Applied in various research





ELISA Formats

ELISA kits are a quick, convenient, and accurate research tool for the detection of targets of interest in cultures and samples. Because of their exceptional advantage, ELISA kits are used in many important research areas, including cancer, cardiovascular, cell biology, epigenetics, metabolism, immunology, neuroscience, signal transduction, etc.

Currently, Reed Biotech has released **Regular ELISA kits**, the **Micro Fast (MF) ELISA kits**, the **High Sensitivity (HS) ELISA kits**, and the **Fast-Step (FS) ELISA kits**, which mainly in sandwich ELISA format. The MF, HS, and FS series have been specifically developed to meet market demands.

KIT	Traditional ELISA	Micro Fast ELISA	High Sensitive ELISA	Universal small molecules	OEM Services
Format	96-well plate	96-well plate	96-well plate	96-well plate	Flexible
Benefit	• Most Choose • Low CVs				
	• Fastest Plate-based ELISA				
	• Highest Sensitivity				
	• Economical • Largest Menu • Flexible				
	• Hands Free • Sensitive				
Sample Volume	100μL	25μL	100μL	50μL	10-100μL
Number of Analytes	1	1	1	1	1
Assay Time	3.5 Hours	≤ 3 Hours	3 Hours	90 minutes	90 minutes
Pre-coated	Yes	Yes	Yes	Yes	Yes

High-scoring literature

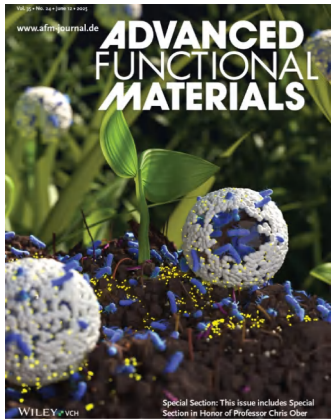
IF: 35.5

Article Name: Effect of Colchicine on Coronary Plaque Stability in Acute Coronary Syndrome as Assessed by Optical Coherence Tomography: The COLOCT Randomized Clinical Trial
Journal: CIRCULATION
Reference Catalog No. : RE1305H
Samples Information:Blood samples (serum; plasma)
DOI: 10.1161/CIRCULATIONAHA.124.069808



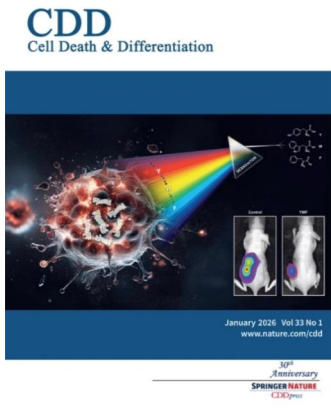
IF: 19.4

Article Name: Magnetic Field Driven Ceria Nanosystems for Mitochondria Targeted Therapy of Ischemic Stroke
Journal: ADVANCED FUNCTIONAL MATERIALS
Reference Catalog No. : IL-6(RE3186R)、IL-10(RE3187R)
Samples Information:Rat brain tissue was homogenized
DOI: 10.1002/adfm.202423291



IF: 15.4

Article Name: Hepatic factor MANF drives hepatocytes reprogramming by detaining cytosolic CK19 in intrahepatic cholangiocarcinoma
Journal: Cell Death & Differentiation
Reference Catalog No. : RE1283H(Human MANF)
Samples Information:Human Serum
DOI: 10.1038/s41418-025-01460-4



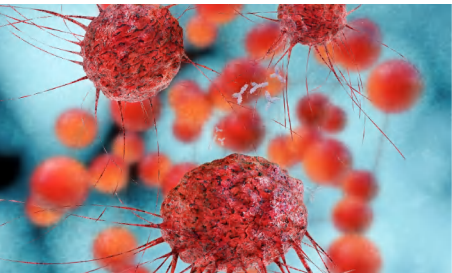
IF: 13.8

Article Name: Redox imbalance drives magnetic property and function changes in mice
Journal: Redox Biology
Reference Catalog No. : IL-1β (RE1074M)、TNF-α (RE1060M)、IL-6 (RE3186M)
Samples Information:Mouse Raw 264.7 Cell Supernatant
DOI:10.1016/j.redox.2025.103561



RESEARCH AREAS

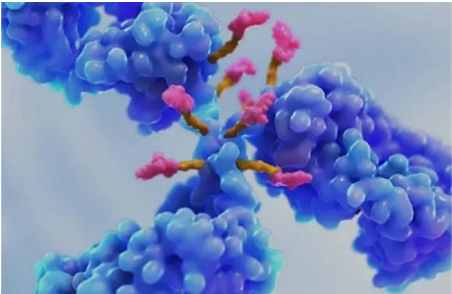
Cell Biology



Research Focus: Cell structure, function, proliferation/apoptosis regulation, signal transduction.

- 1.Multi-dimensional detection:**Quantify intracellular proteins (e.g., cyclin D1, Bcl-2/Bax), membrane markers (e.g., integrins), or secreted factors (e.g., IL-8) in cell lysates, supernatants, or culture media.
- 2.Functional correlation:**Link cytokine/chemokine profiles (e.g., TGF- β) to cell behavior (proliferation, migration) using complementary assays (e.g., scratch assays, MTT tests).
- 3.High-throughput screening:** Validate drug effects on cellular responses (e.g., cytokine secretion) in batch experiments.

Immunology



Research Focus:Immune response mechanisms, immune cell function, antigen- antibody interactions.

- 1.Core tool:**Directly measure antigen-antibody binding (e.g., antibody titer, antigen quantification).
- 2.Dynamic monitoring:**Track antibody titers (IgG/IgM) post-vaccination or inflammation biomarkers (e.g., IL-6, TNF- α) during cytokine storms.

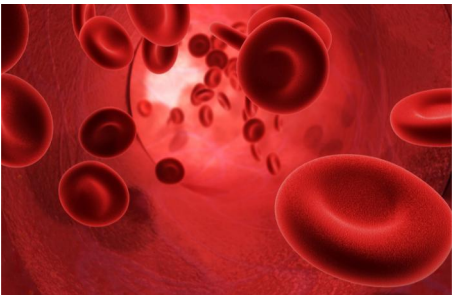
Cardiovascular



Research Focus: Myocardial injury, vascular remodeling, atherosclerosis, heart failure.

- 1.Biomarker detection:**Quantify cardiac-specific markers (cTnl/cTnT, BNP, D-dimer) for early diagnosis or disease severity assessment.
- 2.Inflammation & repair:** Analyze pro-inflammatory (IL-6, MCP-1) or reparative factors (VEGF, PDGF) to study plaque formation or angiogenesis.

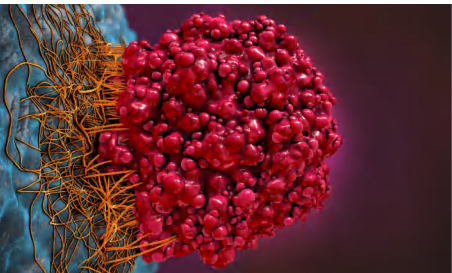
Metabolism



Research Focus: Energy metabolism (glucose/lipid/amino acid), metabolic disorders (diabetes, obesity), regulatory enzymes/ hormones.

- 1.Metabolic factor quantification:**Measure adipokines (leptin, adiponectin), pancreatic hormones (insulin, glucagon), or liver enzymes (HK, FAS).
- 2.Tissue-specific analysis:**Assess metabolic activity in liver/muscle homogenates (e.g., insulin resistance models).
- 3.Sample flexibility:** Compatible with serum, plasma, or tissue lysates for multi-omics integration.

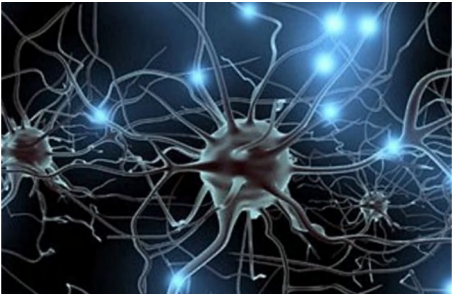
Cancer & Oncology



Research Focus: Tumor markers, oncogenic signaling, tumor microenvironment (TME), drug resistance.

- 1.Ultra-sensitive detection:** Quantify low-abundance markers (CA125, PSA, CTC-related proteins) with LODs down to pg/mL for early screening.
- 2.TME characterization:** Profile immunosuppressive (TGF- β , IL-10) or angiogenic factors (VEGF, FGF) in tumors or serum.
- 3.Therapeutic validation:** Target engagement studies (e.g., HER2, EGFR, PD-L1) to assess drug efficacy/resistance.

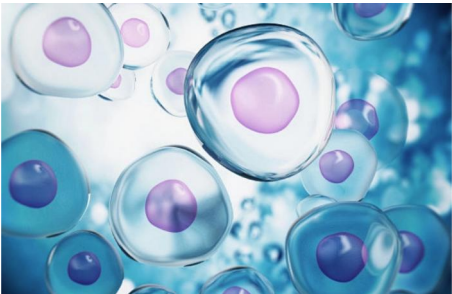
Neuroscience



Research Focus: Neurotransmitters, neurodegenerative diseases (AD/ PD), psychiatric disorders, neuroregeneration.

- 1.Neurotransmitter analysis:**Detect monoamines (5-HT, DA, NE) or metabolites (HVA, DOPAC) in brain tissue/cerebrospinal fluid.
- 2.Neurotrophic factors:** Quantify BDNF, NGF to link neuronal survival/ plasticity to neurodegeneration (e.g., AD).
- 3.Inflammatory markers:** Study IL-1 β , TNF- α , or GFAP in neuroinflammatory conditions (PD, MS).

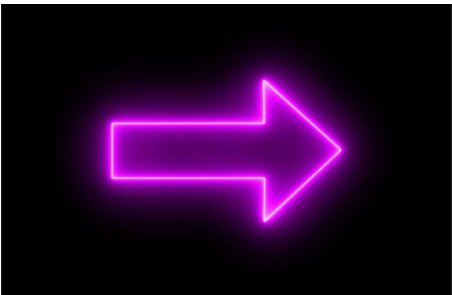
Stem Cell



Research Focus: Stemness maintenance, diferentiation, niche microenvironment, regenerative medicine.

- 1.Stem cell characterization:** Identify surface markers (CD34, CD90, Oct-4) or transcription factors (Sox2, Nanog).
- 2.Differentiation tracking:** Monitor lineage-specific factors (GATA4 for cardiomyocytes, MyoD1 for muscle).
- 3.Niche factor analysis:**Study SCF, VEGF, or BMPs in stem cell niches to optimize regenerative protocols.

Signal Transduction



Research Focus: Signaling pathway activation (MAPK, PI3K/Akt, NF- κ B), receptor-ligand interactions, second messengers.

- 1.Phosphoprotein quantification:** Measure p-ERK, p-Akt, or p-IkBa to assess kinase activity or inhibitor efficacy.
- 2.Receptor-ligand binding:** Evaluate agonist/antagonist effects via competitive or sandwich ELISA.
- 3.Second messenger coupling:** Pair with cAMP/cGMP assays to link GPCR or NO signaling to downstream outcomes.

Catalog Number	Product Name	Detection Range	Sensitivity
RE2069M	Mouse PGF2α(Prostaglandin F2 Alpha) ELISA Kit	15.63-1000pg/mL	9.38 pg/mL
RE1838R	Rat MMP-2(Matrix Metalloproteinase 2) ELISA Kit	0.32-20ng/mL	0.19 ng/mL
RE2745R	Rat MMP-13(Matrix Metalloproteinase 13) ELISA Kit	0.32-20ng/mL	0.19 ng/mL
RE10155	GSH(Glutathione) ELISA Kit	1.57-100 ng/mL	0.48 ng/mL
RE1860H	Human PTHrP(Parathyroid Hormone Related Protein) ELISA Kit	15.63-1000pg/mL	9.38 pg/mL
RE10164	FA(Folic Acid) ELISA Kit	1.56-100 ng/mL	0.94 ng/mL
RE1902H	Human SIRT1(Sirtuin 1) ELISA Kit	0.32-20ng/mL	0.19 ng/mL
RE2344H	Human MUC5B(Mucin 5 Subtype B) ELISA Kit	0.63-40ng/mL	0.38 ng/mL
RE1421R	Rat NOS3/eNOS(Nitric Oxide Synthase 3, Endothelial) ELISA Kit	15.63-1000pg/mL	9.38 pg/mL
RE2796H	Human MMP-9(Matrix Metalloproteinase 9) ELISA Kit	0.16-10ng/mL	0.05 ng/mL
RE2235M	Mouse PAI1(Plasminogen Activator Inhibitor 1) ELISA Kit	0.79-50ng/mL	0.47 ng/mL
RE10134	EPI(Epinephrine/Adrenaline) ELISA Kit	31.25-2000 pg/mL	9.74 pg/mL
RE1094M	Mouse TIMP-1(Tissue Inhibitors of Metalloproteinase 1) ELISA Kit	39.06-2500pg/mL	16.39 pg/mL
RE2796M	Mouse MMP-9(Matrix Metalloproteinase 9) ELISA Kit	0.16-10ng/mL	0.03 ng/mL
RE10007	4-HNE(4-Hydroxynonenal) ELISA Kit	0.63-40 ng/mL	0.38 ng/mL
RE2069R	Rat PGF2α(Prostaglandin F2 Alpha) ELISA Kit	7.82-500pg/mL	4.69 pg/mL
RE1939H	Human GzmB(Granzyme B) ELISA Kit	15.63-1000pg/mL	9.38 pg/mL
RE1002M	Mouse BAFF/CD257(B-cell Activating Factor) ELISA Kit	62.5-4000pg/mL	37.5 pg/mL
RE2395H	Human CALP(Calprotectin) ELISA Kit	1.57-100ng/mL	0.94 ng/mL
RE1094H	Human TIMP-1(Tissue Inhibitors of Metalloproteinase 1) ELISA Kit	78.13-5000pg/mL	23.44 pg/mL
RE1044M	Mouse GDF15(Growth Differentiation Factor 15) ELISA Kit	15.63-1000pg/mL	9.38 pg/mL
RE2244H	Human SOD2(Superoxide Dismutase 2, Mitochondrial) ELISA Kit	0.31-20 ng/mL	0.16 ng/mL
RE2794H	Human MMP-1(Matrix Metalloproteinase 1) ELISA Kit	15.63-1000pg/mL	4.52 pg/mL
RE2972H	Human C5(Complement Component 5) ELISA Kit	78.13-5000pg/mL	46.88 pg/mL
RE2044H	Human TAT(Thrombin/Antithrombin Complex) ELISA Kit	15.63-1000pg/mL	9.38 pg/mL
RE1044H	Human GDF15(Growth Differentiation Factor 15) ELISA Kit	23.44-1500pg/mL	14.06 pg/mL
RE2745M	Mouse MMP-13(Matrix Metalloproteinase 13) ELISA Kit	78.13-5000pg/mL	46.88 pg/mL
RE3044M	Mouse NFkB-p65(Nuclear Factor Kappa B p65) ELISA Kit	0.32-20ng/mL	0.19 ng/mL
RE2235R	Rat PAI1(PlasminogenActivator Inhibitor 1) ELISA Kit	1.57-100ng/mL	0.94 ng/mL
RE3205M	Mouse PCSK9(Proprotein Convertase Subtilisin/Kexin Type 9) ELISA Kit	62.5-4000pg/mL	37.5 pg/mL
RE1596H	Human GAL9(Galectin 9) ELISA Kit	7.82-500pg/mL	4.69 pg/mL
RE2235H	Human PAI1(Plasminogen Activator Inhibitor 1) ELISA Kit	0.16-10ng/mL	0.1 ng/mL
RE1839R	Rat MMP-3(Matrix Metalloproteinase 3) ELISA Kit	0.16-10ng/mL	0.1 ng/mL
RE1108H	Human ISG15(Interferon Stimulated Gene 15) ELISA Kit	31.25-2000pg/mL	18.75 pg/mL
RE3205H	Human PCSK9(Proprotein Convertase Subtilisin/Kexin Type 9) ELISA Kit	0.23-15ng/mL	0.03ng/mL
RE3043H	Human NF-κBp105(Nuclear factor NF-kappa-B p105 subunit) ELISA Kit	0.16-10ng/mL	0.1 ng/mL
RE1363H	Human COMP(Cartilage Oligomeric Matrix Protein) ELISA Kit	0.63-40ng/mL	0.38 ng/mL
RE1838M	Mouse MMP-2(Matrix Metalloproteinase 2) ELISA Kit	0.16-10ng/mL	0.1 ng/mL
RE2237H	Human tPA(Tissue-type Plasminogen Activator) ELISA Kit	0.63-40ng/mL	0.38 ng/mL
RE1857H	Human GAL3(Galectin 3) ELISA Kit	0.16-10ng/mL	0.1 ng/mL
RE3377M	Mouse Cys-C(Cystatin C) ELISA Kit	15.63-1000pg/mL	9.38 pg/mL

RE1421M	Mouse NOS3/eNOS(Nitric Oxide Synthase 3, Endothelial) ELISA Kit	15.63-1000pg/mL	9.38 pg/mL
RE1797H	Human RNASE3/ECP (Ribonuclease A3/Eosinophil Cationic Protein) ELISA Kit	39.07-2500pg/mL	23.44 pg/mL
RE1373M	Mouse CTSK(Cathepsin K) ELISA Kit	15.63-1000pg/mL	9.38 pg/mL
RE1838H	Human MMP-2(Matrix Metalloproteinase 2) ELISA Kit	0.79-50ng/mL	0.47 ng/mL
RE2842H	Human DPP4(Dipeptidyl Peptidase IV) ELISA Kit	0.79-50ng/mL	0.47 ng/mL
RE2395M	Mouse CALP(Calprotectin) ELISA Kit	3.13-200ng/mL	1.88 ng/mL
RE3044R	Rat NFkB-p65(Nuclear Factor Kappa B p65) ELISA Kit	78.13-5000pg/mL	46.88 pg/mL
RE1365H	Human CASP8(Caspase 8) ELISA Kit	0.16-10ng/mL	0.1 ng/mL
RE2836R	Rat Irisin ELISA Kit	78.13-5000pg/mL	46.88 pg/mL
RE1737M	Mouse S100B(S100 Calcium Binding Protein B) ELISA Kit	78.13-5000pg/mL	46.88 pg/mL
RE10130	LTB4(Leukotriene B4) ELISA Kit	15.63-1000 pg/mL	4.39 pg/mL
RE2044M	Mouse TAT(Thrombin/Antithrombin Complex) ELISA Kit	15.63-1000pg/mL	9.38 pg/mL
RE1050M	Mouse LIF(Leukemia Inhibitory Factor) ELISA Kit	15.63-1000pg/mL	9.38 pg/mL
RE1544H	Human α1-AT(Alpha 1-Antitrypsin) ELISA Kit	3.13-200ng/mL	1.88 ng/mL
RE1839H	Human MMP-3(Matrix Metalloproteinase 3) ELISA Kit	0.16-10ng/mL	0.08 ng/mL
RE1421H	Human NOS3/eNOS(Nitric Oxide Synthase 3, Endothelial) ELISA Kit	62.5-4000pg/mL	37.5 pg/mL
RE1050H	Human LIF(Leukemia Inhibitory Factor) ELISA Kit	31.25-2000pg/mL	18.75 pg/mL
RE2571H	Human CTSS(Cathepsin S) ELISA Kit	0.16-10ng/mL	0.1 ng/mL
RE2796R	Rat MMP-9(Matrix Metalloproteinase 9) ELISA Kit	39.06-2500pg/mL	7.15 pg/mL
RE1846H	Human TIMP-3(Tissue Inhibitors of Metalloproteinase 3) ELISA Kit	62.5-4000pg/mL	37.5 pg/mL
RE2794M	Mouse MMP-1(Matrix Metalloproteinase 1) ELISA Kit	125-8000pg/mL	75 pg/mL
RE3037M	Mouse SP-D(Pulmonary surfactant-associated protein D) ELISA Kit	0.16-10ng/mL	0.1 ng/mL
RE1916H	Human PDGF-AB(Platelet Derived Growth Factor AB) ELISA Kit	31.25-2000pg/mL	18.75 pg/mL
RE3546H	Human TPO(Thrombopoietin) ELISA Kit	31.25-2000pg/mL	18.75 pg/mL
RE2458H	Human TNFRSF1B(Tumor Necrosis Factor Receptor Superfamily, Member 1B) ELISA Kit	7.82-500pg/mL	4.69 pg/mL
RE3377H	Human Cys-C(Cystatin C) ELISA Kit	1.56-100ng/mL	0.94 ng/mL
RE1098H	Human C5a(Complement Component 5a) ELISA Kit	78.13-5000pg/mL	46.88 pg/mL
RE1033H	Human EGF(Epidermal Growth Factor) ELISA Kit	1.56-100pg/mL	0.22 pg/mL
RE3546M	Mouse TPO(Thrombopoietin) ELISA Kit	7.82-500pg/mL	4.69 pg/mL
RE1939M	Mouse GzmB(Granzyme B) ELISA Kit	15.63-1000pg/mL	9.38 pg/mL
RE1033M	Mouse EGF(Epidermal Growth Factor) ELISA Kit	15.63-1000pg/mL	9.38 pg/mL
RE1842H	Human MMP-7(Matrix Metalloproteinase 7) ELISA Kit	39.06-2500pg/mL	20.67 pg/mL
RE3062H	Human NFE2L2(NuclearFactor, Erythroid Derived 2 Like 2) ELISA Kit	0.16-10ng/mL	0.1 ng/mL
RE2408M	Mouse sC5b-9(Soluble Terminal Complement Complex C5b-9) ELISA Kit	0.32-20ng/mL	0.19 ng/mL
RE10151	LXA4(Lipoxin A4) ELISA Kit	625-40000 pg/mL	175.4 pg/mL
RE2864H	Human IGFBP-3(Insulin-like Growth Factor Binding Protein 3) ELISA Kit	78.13-5000pg/mL	3.74 pg/mL
RE3044H	Human NFkB-p65(Nuclear Factor Kappa B p65) ELISA Kit	0.16-10ng/mL	0.1 ng/mL
RE2836M	Mouse Irisin ELISA Kit	78.13-5000pg/mL	46.88 pg/mL
RE1098M	Mouse C5a(Complement Component 5a) ELISA Kit	62.5-4000pg/mL	37.5 pg/mL
RE1737H	Human S100B(S100 Calcium Binding Protein B) ELISA Kit	7.81-500pg/mL	3.11 pg/mL
RE1964H	Human mTOR(Mammalian Target of Rapamycin) ELISA Kit	0.16-10ng/mL	0.1 ng/mL

Catalog Number	Product Name	Detection Range	Sensitivity
RE3097M	Mouse GROβ/CXCL2(Growth Regulated Oncogene Beta) ELISA Kit	0.31-20pg/mL	2.36 pg/mL
RE2343H	Human MUC5AC(Mucin 5 Subtype AC) ELISA Kit	0.32-20ng/mL	0.19 ng/mL
RE1060R	Rat TNF-α(Tumor Necrosis Factor Alpha) ELISA Kit	0.78-50pg/mL	0.15 pg/mL
RE1056M	Mouse IL-13(Interleukin 13) ELISA Kit	31.25-2000pg/mL	18.75 pg/mL
RE2866H	Human IL-2(Interleukin 2) ELISA Kit	7.82-500pg/mL	4.69 pg/mL
RE2428M	Mouse IL-33(Interleukin 33) ELISA Kit	15.63-1000pg/mL	9.38 pg/mL
RE1075M	Mouse IL-12(Interleukin 12) ELISA Kit	0.79-50pg/mL	0.47 pg/mL
RE1059H	Human IFN-γ(Interferon Gamma) ELISA Kit	12.5-800pg/mL	2.94 pg/mL
RE2824H	Human IgE(Immunoglobulin E) ELISA Kit	78.13-5000pg/mL	6.34 pg/mL
RE2408H	Human sC5b-9(Soluble Terminal Complement Complex C5b-9) ELISA Kit	31.25-2000ng/mL	18.75 ng/mL
RE1060H	Human TNF-α(Tumor Necrosis Factor Alpha) ELISA Kit	3.13-200pg/mL	0.18pg/mL
RE1058M	Mouse IL-23(Interleukin 23) ELISA Kit	15.63-1000pg/mL	9.38 pg/mL
RE2775H	Human C3(Complement Component 3) ELISA Kit	1.57-100ng/mL	0.94 ng/mL
RE3186M	Mouse IL-6(Interleukin 6) ELISA Kit	1.56-100pg/mL	0.2 pg/mL
RE2862M	Mouse GM-CSF(Granulocyte-Macrophage Colony Stimulating Factor) ELISA Kit	0.78-50pg/mL	0.04 pg/mL
RE1055R	Rat IL-4(Interleukin 4) ELISA Kit	15.63-1000pg/mL	9.38 pg/mL
RE2783M	Mouse Mly/CXCL9(Monocyte Interferon Gamma Inducing Factor) ELISA Kit	15.63-1000pg/mL	9.38 pg/mL
RE2802H	Human sST2(Soluble ST2) ELISA Kit	31.25-2000pg/mL	4.88 pg/mL
RE3086H	Human IgM(Immunoglobulin M) ELISA Kit	3.13-200ng/mL	1.88 ng/mL
RE3202H	Human RANTES(Regulated On Activation, Normal T-Cell Expressed and Secreted) ELISA Kit	1.56-100pg/mL	0.15 pg/mL
RE2792H	Human IgA(Immunoglobulin A) ELISA Kit	0.78-50ng/mL	0.62 ng/mL
RE10185	8-OHdG(8-Hydroxydeoxyguanosine) ELISA Kit	1.56-100 ng/mL	0.94 ng/mL
RE1099M	Mouse IL-5(Interleukin 5) ELISA Kit	15.63-1000pg/mL	9.38 pg/mL
RE2750M	Mouse KIM-1(Kidney Injury Molecule 1) ELISA Kit	0.16-10ng/mL	0.1 ng/mL
RE2733H	Human IL-8(Interleukin 8) ELISA Kit	7.82-500pg/mL	4.69 pg/mL
RE2839M	Mouse IFNα(Interferon Alpha) ELISA Kit	15.63-1000pg/mL	9.38 pg/mL
RE2873M	Mouse IgG(Immunoglobulin G) ELISA Kit	1.56-100ng/mL	0.06 ng/mL
RE2867R	Rat IL-17A(Interleukin 17A) ELISA Kit	15.63-1000pg/mL	9.38 pg/mL
RE1098M	Mouse C5a(Complement Component 5a) ELISA Kit	62.5-4000pg/mL	37.5 pg/mL
RE1074H	Human IL-1β(Interleukin 1 Beta) ELISA Kit	0.31-20pg/mL	0.18 pg/mL
RE3187R	Rat IL-10(Interleukin 10) ELISA Kit	7.81-500pg/mL	1.70 pg/mL
RE3097H	Human GROβ/CXCL2(Growth Regulated Oncogene Beta) ELISA Kit	15.63-1000pg/mL	9.38 pg/mL
RE10142	HIS(Histamine) ELISA Kit	1.57-100 ng/mL	0.51 ng/mL
RE2731M	Mouse MCP-1(Monocyte Chemotactic Protein 1) ELISA Kit	1.56-100pg/mL	0.22 pg/mL
RE1123R	Rat IL-18(Interleukin 18) ELISA Kit	15.63-1000pg/mL	9.38 pg/mL
RE2731H	Human MCP-1(Monocyte Chemotactic Protein 1) ELISA Kit	15.63-1000pg/mL	9.38 pg/ml
RE1013H	Human TARC(Thymus Activation Regulated Chemokine) ELISA Kit	31.25-2000pg/mL	18.75 pg/mL
RE2867M	Mouse IL-17A(Interleukin 17A) ELISA Kit	0.78-50pg/mL	0.41 pg/mL
RE2788H	Human LRG1 (Leucine Rich Alpha-2-Glycoprotein 1) ELISA Kit	0.63-40ng/mL	0.38 ng/mL
RE1939M	Mouse GzmB(Granzyme B) ELISA Kit	15.63-1000pg/mL	9.38 pg/mL

RE3086R	Rat IgM(Immunoglobulin M) ELISA Kit	7.82-500ng/mL	4.69 ng/mL
RE1026M	Mouse GROα/CXCL1(Growth Regulated Oncogene Alpha) ELISA Kit	15.63-1000pg/mL	9.38 pg/mL
RE3187M	Mouse IL-10(Interleukin 10) ELISA Kit	15.63-1000pg/mL	9.38 pg/mL
RE1721M	Mouse slgA(Secretory Immunoglobulin A) ELISA Kit	0.16-10ng/mL	0.1 ng/mL
RE1074M	Mouse IL-1β(Interleukin 1 Beta) ELISA Kit	3.91-250pg/mL	2.35 pg/mL
RE1059M	Mouse IFN-γ(Interferon Gamma) ELISA Kit	1.56-100pg/mL	0.94 pg/mL
RE1047H	Human IL-1α(Interleukin 1 Alpha) ELISA Kit	3.91-250pg/mL	2.35 pg/mL
RE2854M	Mouse CRP(C-Reactive Protein) ELISA Kit	0.31-20ng/mL	0.18 ng/mL
RE2824R	Rat IgE(Immunoglobulin E) ELISA Kit	1.57-100ng/mL	0.94 ng/mL
RE3186R	Rat IL-6(Interleukin 6) ELISA Kit	31.25- 2000pg/mL	28.77 pg/mL
RE1046H	Human IFN-β(Interferon Beta) ELISA Kit	31.25-2000pg/mL	18.75 pg/mL
RE1939H	Human GzmB(Granzyme B) ELISA Kit	15.63-1000pg/mL	9.38 pg/mL
RE1055M	Mouse IL-4(Interleukin 4) ELISA Kit	31.25-2000pg/mL	18.75 pg/mL
RE1055H	Human IL-4(Interleukin 4) ELISA Kit	31.25-2000pg/mL	18.75 pg/mL
RE2857M	Mouse SDF-1/CXCL12(Stromal Cell Derived Factor 1) ELISA Kit	78.13-5000pg/mL	46.88 pg/mL
RE1453M	Mouse C3a(Complement Component 3a) ELISA Kit	0.16-10ng/mL	0.1 ng/mL
RE2428H	Human IL-33(Interleukin 33) ELISA Kit	3.13-200pg/mL	0.33 pg/mL
RE2452H	Human TSPAN30/CD63(Tetraspanin 30) ELISA Kit	0.16-10ng/mL	0.1 ng/mL
RE3098H	Human NE/ELA2(Neutrophil Elastase/Elastase-2) ELISA Kit	0.79-50ng/mL	0.47 ng/mL
RE1075H	Human IL-12(Interleukin 12) ELISA Kit	15.63-1000pg/mL	9.38 pg/mL
RE3186H	Human IL-6(Interleukin 6) ELISA Kit	1.57-100pg/mL	0.94 pg/mL
RE10151	LXA4(Lipoxin A4) ELISA Kit	625-40000 pg/mL	175.4 pg/mL
RE2873H	Human IgG(Immunoglobulin G) ELISA Kit	1.56-100ng/mL	0.74 ng/mL
RE2459H	Human LL-37(Antibacterial Protein LL-37) ELISA Kit	1.57-100ng/mL	0.94 ng/mL
RE1046M	Mouse IFN-β(Interferon Beta) ELISA Kit	15.63-1000pg/mL	9.38 pg/mL
RE2854H	Human CRP(C-Reactive Protein) ELISA Kit	0.78-50ng/mL	0.47 ng/mL
RE2792M	Mouse IgA(Immunoglobulin A) ELISA Kit	6.25-400ng/mL	3.75 ng/mL
RE3202M	Mouse RANTES(Regulated On Activation, Normal T-Cell Expressed and Secreted) ELISA Kit	31.25-2000pg/mL	18.75 pg/mL
RE1123H	Human IL-18(Interleukin 18) ELISA Kit	7.81-500pg/mL	0.89 pg/mL
RE2839H	Human IFNα(Interferon Alpha) ELISA Kit	7.82-500pg/mL	4.69 pg/mL
RE2750H	Human KIM-1(Kidney Injury Molecule 1) ELISA Kit	7.82-500pg/mL	4.69 pg/mL
RE1059R	Rat IFN-γ(Interferon Gamma) ELISA Kit	31.25-2000pg/mL	16.64 pg/mL
RE2807M	Mouse IgG1(Immunoglobulin G1) ELISA Kit	6.25-400ng/mL	3.75 ng/mL
RE1047M	Mouse IL-1α(Interleukin 1 Alpha) ELISA Kit	0.79-50pg/mL	0.47 pg/mL
RE3086M	Mouse IgM(Immunoglobulin M) ELISA Kit	3.13-200ng/mL	1.88 ng/mL
RE1028M	Mouse IP-10/CXCL10(Interferon Gamma Induced Protein 10kDa) ELISA Kit	31.25-2000pg/mL	18.75 pg/mL
RE10129	ACH(Acetylcholine) ELISA Kit	15.63-1000 pg/mL	5.31 pg/mL
RE1123M	Mouse IL-18(Interleukin 18) ELISA Kit	15.63-1000pg/mL	9.38 pg/mL
RE2857H	Human SDF-1/CXCL12(Stromal Cell Derived Factor 1) ELISA Kit	0.16-10ng/mL	0.1 ng/mL
RE2866M	Mouse IL-2(Interleukin 2) ELISA Kit	15.63-1000pg/mL	9.38 pg/mL
RE1074R	Rat IL-1β(Interleukin 1 Beta) ELISA Kit	15.63-1000pg/mL	9.38 pg/mL

Catalog Number	Product Name	Detection Range	Sensitivity
RE1074H	Human IL-1β(Interleukin 1 Beta) ELISA Kit	0.31-20pg/mL	0.18 pg/mL
RE2848H	Human BDNF(Brain Derived Neurotrophic Factor) ELISA Kit	31.25-2000pg/mL	18.75 pg/mL
RE1549H	Human GLα(Galactosidase Alpha) ELISA Kit	78.13-5000pg/mL	46.88 pg/mL
RE3202H	Human RANTES(Regulated On Activation, Normal T-Cell Expressed and Secreted) ELISA Kit	1.56-100pg/mL	0.15 pg/mL
RE3184M	Mouse NT-proBNP(N-terminal pro-Brain Natriuretic Peptide) ELISA Kit	15.63-1000pg/mL	9.38 pg/mL
RE10185	8-OHdG(8-Hydroxydeoxyguanosine) ELISA Kit	1.56-100 ng/mL	0.94 ng/mL
RE1089H	Human FN(Fibronectin) ELISA Kit	1.57-100ng/mL	0.94 ng/mL
RE2044M	Mouse TAT(Thrombin/Antithrombin Complex) ELISA Kit	15.63-1000pg/mL	9.38 pg/mL
RE2763H	Human bFGF/FGF2(Basic Fibroblast Growth Factor) ELISA Kit	31.25-2000pg/mL	18.75 pg/mL
RE1463R	Rat CTX (Cross Linked C-telopeptide of Type Collagen) ELISA Kit	0.16-10ng/mL	0.1 ng/mL
RE2848R	Rat BDNF(Brain Derived Neurotrophic Factor) ELISA Kit	31.25-2000pg/mL	18.75 pg/mL
RE2731H	Human MCP-1(Monocyte Chemotactic Protein 1) ELISA Kit	15.63-1000pg/mL	9.38 pg/ml
RE1060M	Mouse TNF-α(Tumor Necrosis Factor Alpha) ELISA Kit	0.94-60pg/mL	0.27 pg/mL
RE2837M	Mouse ADP/Acrp30(Adiponectin) ELISA Kit	15.63-1000pg/mL	9.38 pg/mL
RE2796M	Mouse MMP-9(Matrix Metalloproteinase 9) ELISA Kit	0.16-10ng/mL	0.03 ng/mL
RE1060H	Human TNF-α(Tumor Necrosis Factor Alpha) ELISA Kit	3.13-200pg/mL	0.18pg/mL
RE10013	TGF-β1(Transforming Growth Factor Beta 1) ELISA Kit	31.25-2000pg/mL	18.75 pg/mL
RE2825M	Mouse ALB(Albumin) ELISA Kit	62.5-4000ng/mL	37.5 ng/mL
RE10217	A-CoA(Acetyl Coenzyme A) ELISA Kit	0.32-20ng/mL	0.19ng/mL
RE2854M	Mouse CRP(C-Reactive Protein) ELISA Kit	0.31-20ng/mL	0.18 ng/mL
RE3159R	Rat CRP(C-Reactive Protein) ELISA Kit	7.82-500pg/mL	4.69 pg/mL
RE2826H	Human FG(Fibrinogen) ELISA Kit	15.63-1000ng/mL	9.38 ng/mL
RE3153R	Rat INS(Insulin) ELISA Kit	6.25-400pg/mL	3.75 pg/mL
RE2268H	Human IDO(Indoleamine-2,3-Dioxygenase) ELISA Kit	0.32-20ng/mL	0.19 ng/mL
RE1074M	Mouse IL-1β(Interleukin 1 Beta) ELISA Kit	3.91-250pg/mL	2.35 pg/mL
RE2733H	Human IL-8(Interleukin 8) ELISA Kit	7.82-500pg/mL	4.69 pg/mL
RE2736H	Human Hepc(Hepcidin)ELISA Kit	62.5-4000pg/mL	37.5 pg/mL
RE10009	SP(Substance P) ELISA Kit	78.13-5000 pg/mL	46.88 pg/mL
RE1463M	Mouse CTX (Cross Linked C-telopeptide of Type Collagen) ELISA Kit	31.25-2000pg/mL	18.75 pg/mL
RE1044M	Mouse GDF15(Growth Differentiation Factor 15) ELISA Kit	15.63-1000pg/mL	9.38 pg/mL
RE3155M	Mouse EPO(Erythropoietin) ELISA Kit	7.82-500pg/mL	4.69 pg/mL
RE3184R	Rat NT-proBNP(N-Terminal Pro-Brain Natriuretic Peptide) ELISA Kit	62.5-4000pg/mL	37.5 pg/mL
RE3159H	Human hs-CRP(high-sensitivity C-Reactive Protein) ELISA Kit	15.63-1000pg/mL	9.38 pg/mL
RE2857M	Mouse SDF-1/CXCL12(Stromal Cell Derived Factor 1) ELISA Kit	78.13-5000pg/mL	46.88 pg/mL
RE1649H	Human ELN(Elastin) ELISA Kit	0.47-30ng/mL	0.28 ng/mL
RE2825H	Human ALB(Albumin) ELISA Kit	1.56-100ng/mL	1.42 ng/mL
RE1358R	Rat cTnT/TNNT2(Troponin T Type 2, Cardiac) ELISA Kit	15.63-1000pg/mL	9.38 pg/mL
RE2805H	Human sTfR1(Soluble Transferrin Receptor 1) ELISA Kit	6.25-400ng/mL	3.75 ng/mL
RE2452H	Human TSPAN30/CD63(Tetraspanin 30) ELISA Kit	0.16-10ng/mL	0.1 ng/mL
RE2938R	Rat TNNI3/cTn-I(Troponin I Type 3, Cardiac) ELISA Kit	31.25-2000pg/mL	18.75 pg/mL
RE1046H	Human IFN-β(Interferon Beta) ELISA Kit	31.25-2000pg/mL	18.75 pg/mL

RE1061H	Human VEGF-A(Vascular Endothelial Cell Growth Factor A) ELISA Kit	31.25-2000pg/mL	18.75 pg/mL
RE3138H	Human HS(Heparan Sulfate) ELISA Kit	0.32-20ng/mL	0.19 ng/mL
RE1060R	Rat TNF-α(Tumor Necrosis Factor Alpha) ELISA Kit	0.78-50pg/mL	0.15 pg/mL
RE2938M	Mouse TNNI3/cTn-I(Troponin I Type 3, Cardiac) ELISA Kit	7.82-500pg/mL	4.69 pg/mL
RE1056M	Mouse IL-13(Interleukin 13) ELISA Kit	31.25-2000pg/mL	18.75 pg/mL
RE1358M	Mouse cTnT/TNNT2(Troponin T Type 2, Cardiac) ELISA Kit	15.63-1000pg/mL	9.38 pg/mL
RE2739M	Mouse LEP(Leptin) ELISA Kit	7.81-500pg/mL	1.01 pg/mL
RE1838H	Human MMP-2(Matrix Metalloproteinase 2) ELISA Kit	0.79-50ng/mL	0.47 ng/mL
RE1046M	Mouse IFN-β(Interferon Beta) ELISA Kit	15.63-1000pg/mL	9.38 pg/mL
RE2102M	Mouse NPY(Neuropeptide Y) ELISA Kit	31.25-2000pg/mL	18.75 pg/mL
RE2740M	Mouse MAU(Microalbuminuria) ELISA Kit	0.16-10ng/mL	0.1 ng/mL
RE3153H	Human INS(Insulin) ELISA Kit	0.16-10μIU/mL	0.04 μIU/mL
RE3160H	Human LTF/LF(Lactoferrin) ELISA Kit	0.32-20ng/mL	0.19 ng/mL
RE1042M	Mouse FGF21(Fibroblast Growth Factor 21) ELISA Kit	31.25-2000pg/mL	18.75 pg/mL
RE3155R	Rat EPO(Erythropoietin) ELISA Kit	62.5-4000pg/mL	37.5 pg/mL
RE3048M	Mouse CKMB(Creatine Kinase MB Isoenzyme) ELISA Kit	78.13-5000pg/mL	46.88 pg/mL
RE3202M	Mouse RANTES(Regulated On Activation, Normal T-Cell Expressed and Secreted) ELISA Kit	31.25-2000pg/mL	18.75 pg/mL
RE2787R	Rat HIF-1α(Hypoxia Inducible Factor 1 Alpha) ELISA Kit	7.82-500pg/mL	4.69 pg/mL
RE10132	NA/NE(Noradrenaline/Norepinephrine) ELISA Kit	78.13-5000 pg/mL	26.1 pg/mL
RE1042H	Human FGF21(Fibroblast Growth Factor 21) ELISA Kit	31.25-2000pg/mL	18.75 pg/mL
RE2747H	Human GLP-1(Glucagon Like Peptide 1) ELISA Kit	1.57-100pg/mL	0.94 pg/mL
RE1770M	Mouse OPN(Osteopontin) ELISA Kit	0.16-10ng/mL	0.1 ng/mL
RE1074R	Rat IL-1β(Interleukin 1 Beta) ELISA Kit	15.63-1000pg/mL	9.38 pg/mL
RE2731M	Mouse MCP-1(Monocyte Chemotactic Protein 1) ELISA Kit	1.56-100pg/mL	0.22 pg/mL
RE2837H	Human ADP/Acrp30(Adiponectin) ELISA Kit	31.25-2000pg/mL	18.75 pg/mL
RE10134	EPI(Epinephrine/Adrenaline) ELISA Kit	31.25-2000 pg/mL	9.74 pg/mL
RE2276H	Human HO1(Heme Oxygenase 1) ELISA Kit	0.32-20ng/mL	0.19 ng/mL
RE3153M	Mouse INS(Insulin) ELISA Kit	3.13-200pg/mL	1.88 pg/mL
RE2802H	Human sST2(Soluble ST2) ELISA Kit	31.25-2000pg/mL	4.88 pg/mL
RE3193R	Rat BNP(Brain Natriuretic Peptide) ELISA Kit	31.25-2000pg/mL	18.75 pg/mL
RE1770H	Human OPN(Osteopontin) ELISA Kit	0.32-20ng/mL	0.19 ng/mL
RE2675H	Human VCAM-1/CD106(Vascular Cell Adhesion Molecule 1) ELISA Kit	1.57-100ng/mL	0.94 ng/mL
RE1061M	Mouse VEGF-A(Vascular Endothelial Cell Growth Factor A) ELISA Kit	31.25-2000pg/mL	18.75 pg/mL
RE2848M	Mouse BDNF(Brain Derived Neurotrophic Factor) ELISA Kit	31.25-2000pg/mL	18.75 pg/mL
RE2794H	Human MMP-1(Matrix Metalloproteinase 1) ELISA Kit	15.63-1000pg/mL	4.52 pg/mL
RE1036M	Mouse ET-1(Endothelin 1) ELISA Kit	0.79-50pg/mL	0.47 pg/mL
RE3048R	Rat CKMB(Creatine Kinase MB Isoenzyme) ELISA Kit	31.25-2000pg/mL	18.75 pg/mL
RE2749H	Human TF (Transferrin) ELISA Kit	3.13-200μg/mL	1.88 μg/mL
RE2857H	Human SDF-1/CXCL12(Stromal Cell Derived Factor 1) ELISA Kit	0.16-10ng/mL	0.1 ng/mL
RE2747M	Mouse GLP-1(Glucagon Like Peptide 1) ELISA Kit	0.16-10ng/mL	0.1 ng/mL
RE1036H	Human ET-1(Endothelin 1) ELISA Kit	1.25-80pg/mL	0.75 pg/mL

Catalog Number	Product Name	Detection Range	Sensitivity
RE3021M	Mouse FSH(Follicle Stimulating Hormone) ELISA Kit	1.57-100ng/mL	0.94 ng/mL
RE2787R	Rat HIF-1α(Hypoxia Inducible Factor 1 Alpha) ELISA Kit	7.82-500pg/mL	4.69 pg/mL
RE2933R	Rat CGRP1(Calcitonin Gene Related Peptide 1) ELISA Kit	15.63-1000pg/mL	9.38 pg/mL
RE3153R	Rat INS(Insulin) ELISA Kit	6.25-400pg/mL	3.75 pg/mL
RE2184H	Human MT(Melatonin) ELISA Kit	15.63-1000pg/mL	9.38 pg/mL
RE1061R	Rat VEGF-A(Vascular Endothelial Cell Growth Factor A) ELISA Kit	31.25-2000pg/mL	18.75 pg/mL
RE2854M	Mouse CRP(C-Reactive Protein) ELISA Kit	0.31-20ng/mL	0.18 ng/mL
RE1060R	Rat TNF-α(Tumor Necrosis Factor Alpha) ELISA Kit	0.78-50pg/mL	0.15 pg/mL
RE1098M	Mouse C5a(Complement Component 5a) ELISA Kit	62.5-4000pg/mL	37.5 pg/mL
RE1060H	Human TNF-α(Tumor Necrosis Factor Alpha) ELISA Kit	3.13-200pg/mL	0.18pg/mL
RE1463M	Mouse CTX (Cross Linked C-telopeptide of Type Collagen) ELISA Kit	31.25-2000pg/mL	18.75 pg/mL
RE2836M	Mouse Irisin ELISA Kit	78.13-5000pg/mL	46.88 pg/mL
RE1074M	Mouse IL-1β(Interleukin 1 Beta) ELISA Kit	3.91-250pg/mL	2.35 pg/mL
RE2848M	Mouse BDNF(Brain Derived Neurotrophic Factor) ELISA Kit	31.25-2000pg/mL	18.75 pg/mL
RE3048M	Mouse CKMB(Creatine Kinase MB Isoenzyme) ELISA Kit	78.13-5000pg/mL	46.88 pg/mL
RE1123H	Human IL-18(Interleukin 18) ELISA Kit	7.81-500pg/mL	0.89 pg/mL
RE10161	5-HIAA(5-Hydroxyindoleacetic Acid) ELISA Kit	6.25-400 ng/mL	1.93 ng/mL
RE3064H	Human PDGF-BB(Platelet Derived Growth Factor BB) ELISA Kit	7.81-500 pg/mL	4.69 pg/mL
RE3153H	Human INS(Insulin) ELISA Kit	0.16-10μIU/mL	0.04 μIU/mL
RE10217	A-CoA(Acetyl Coenzyme A) ELISA Kit	0.32-20ng/mL	0.19ng/mL
RE10013	TGF-β1(Transforming Growth Factor Beta 1) ELISA Kit	31.25-2000pg/mL	18.75 pg/mL
RE2736H	Human Hepc(Hepcidin)ELISA Kit	62.5-4000pg/mL	37.5 pg/mL
RE1074H	Human IL-1β(Interleukin 1 Beta) ELISA Kit	0.31-20pg/mL	0.18 pg/mL
RE2825H	Human ALB(Albumin) ELISA Kit	1.56-100ng/mL	1.42 ng/mL
RE3155H	Human EPO(Erythropoietin) ELISA Kit	1.57-100mIU/mL	0.94 mIU/mL
RE2837H	Human ADP/Acrp30(Adiponectin) ELISA Kit	31.25-2000pg/mL	18.75 pg/mL
RE1060M	Mouse TNF-α(Tumor Necrosis Factor Alpha) ELISA Kit	0.94-60pg/mL	0.27 pg/mL
RE10155	GSH(Glutathione) ELISA Kit	1.57-100 ng/mL	0.48 ng/mL
RE1699R	Rat DAO(Diamine Oxidase) ELISA Kit	0.16-10ng/mL	0.1 ng/mL
RE1061M	Mouse VEGF-A(Vascular Endothelial Cell Growth Factor A) ELISA Kit	31.25-2000pg/mL	18.75 pg/mL
RE10134	EPI(Epinephrine/Adrenaline) ELISA Kit	31.25-2000 pg/mL	9.74 pg/mL
RE1047M	Mouse IL-1α(Interleukin 1 Alpha) ELISA Kit	0.79-50pg/mL	0.47 pg/mL
RE3186H	Human IL-6(Interleukin 6) ELISA Kit	1.57-100pg/mL	0.94 pg/mL
RE2826H	Human FG(Fibrinogen) ELISA Kit	15.63-1000ng/mL	9.38 ng/mL
RE2731M	Mouse MCP-1(Monocyte Chemotactic Protein 1) ELISA Kit	1.56-100pg/mL	0.22 pg/mL
RE1463R	Rat CTX (Cross Linked C-telopeptide of Type Collagen) ELISA Kit	0.16-10ng/mL	0.1 ng/mL
RE2805H	Human sTfR1(Soluble Transferrin Receptor 1) ELISA Kit	6.25-400ng/mL	3.75 ng/mL
RE2184M	Mouse MT(Melatonin) ELISA Kit	7.82-500pg/mL	4.69 pg/mL
RE3186R	Rat IL-6(Interleukin 6) ELISA Kit	31.25- 2000pg/mL	28.77 pg/mL
RE1098H	Human C5a(Complement Component 5a) ELISA Kit	78.13-5000pg/mL	46.88 pg/mL
RE10127	25-HVD3(25-Hydroxy Vitamin D3) ELISA Kit	3.13-200 ng/mL	0.91 ng/mL

RE10165	MDA(Malondialdehyde) ELISA Kit	31.25-2000 ng/mL	9.15 ng/mL
RE1061H	Human VEGF-A(Vascular Endothelial Cell Growth Factor A) ELISA Kit	31.25-2000pg/mL	18.75 pg/mL
RE2268H	Human IDO(Indoleamine-2,3-Dioxygenase) ELISA Kit	0.32-20ng/mL	0.19 ng/mL
RE1419M	Mouse NOS2/iNOS(Nitric Oxide Synthase 2, Inducible) ELISA Kit	0.32-20ng/mL	0.19 ng/mL
RE1838H	Human MMP-2(Matrix Metalloproteinase 2) ELISA Kit	0.79-50ng/mL	0.47 ng/mL
RE10007	4-HNE(4-Hydroxynonenal) ELISA Kit	0.63-40 ng/mL	0.38 ng/mL
RE2837M	Mouse ADP/Acrp30(Adiponectin) ELISA Kit	15.63-1000pg/mL	9.38 pg/mL
RE2739M	Mouse LEP(Leptin) ELISA Kit	7.81-500pg/mL	1.01 pg/mL
RE1738H	Human SDC1(Syndecan 1) ELISA Kit	0.16-10ng/mL	0.1 ng/mL
RE3048R	Rat CKMB(Creatine Kinase MB Isoenzyme) ELISA Kit	31.25-2000pg/mL	18.75 pg/mL
RE2917M	Mouse ARG1(Arginase1) ELISA Kit	0.79-50ng/mL	0.47 ng/mL
RE3155M	Mouse EPO(Erythropoietin) ELISA Kit	7.82-500pg/mL	4.69 pg/mL
RE2848H	Human BDNF(Brain Derived Neurotrophic Factor) ELISA Kit	31.25-2000pg/mL	18.75 pg/mL
RE2848R	Rat BDNF(Brain Derived Neurotrophic Factor) ELISA Kit	31.25-2000pg/mL	18.75 pg/mL
RE1036M	Mouse ET-1(Endothelin 1) ELISA Kit	0.79-50pg/mL	0.47 pg/mL
RE3154R	Rat TSH(Thyroid Stimulating Hormone) ELISA Kit	1.25-80ng/mL	0.75 ng/mL
RE3154M	Mouse TSH(Thyroid Stimulating Hormone) ELISA Kit	1.25-80ng/mL	0.75 ng/mL
RE1036R	Rat ET-1(Endothelin 1) ELISA Kit	0.79-50pg/mL	0.47 pg/mL
RE2731H	Human MCP-1(Monocyte Chemotactic Protein 1) ELISA Kit	15.63-1000pg/mL	9.38 pg/ml
RE1036H	Human ET-1(Endothelin 1) ELISA Kit	1.25-80pg/mL	0.75 pg/mL
RE2840M	Mouse NGAL(Neutrophil Gelatinase Associated Lipocalin) ELISA Kit	39.07-2500pg/mL	23.44 pg/mL
RE1074R	Rat IL-1β(Interleukin 1 Beta) ELISA Kit	15.63-1000pg/mL	9.38 pg/mL
RE2854H	Human CRP(C-Reactive Protein) ELISA Kit	0.78-50ng/mL	0.47 ng/mL
RE2102M	Mouse NPY(Neuropeptide Y) ELISA Kit	31.25-2000pg/mL	18.75 pg/mL
RE2933M	Mouse CGRP1(Calcitonin Gene Related Peptide 1) ELISA Kit	15.63-1000pg/mL	9.38 pg/mL
RE2742M	Mouse C-P(C-Peptide) ELISA Kit	0.16-10ng/mL	0.1 ng/mL
RE2933H	Human CGRP1(Calcitonin Gene Related Peptide 1) ELISA Kit	15.63-1000pg/mL	9.38 pg/mL
RE1123M	Mouse IL-18(Interleukin 18) ELISA Kit	15.63-1000pg/mL	9.38 pg/mL
RE2740M	Mouse MAU(Microalbuminuria) ELISA Kit	0.16-10ng/mL	0.1 ng/mL
RE3186M	Mouse IL-6(Interleukin 6) ELISA Kit	1.56-100pg/mL	0.2 pg/mL
RE10185	8-OHdG(8-Hydroxydeoxyguanosine) ELISA Kit	1.56-100 ng/mL	0.94 ng/mL
RE2825M	Mouse ALB(Albumin) ELISA Kit	62.5-4000ng/mL	37.5 ng/mL
RE3153M	Mouse INS(Insulin) ELISA Kit	3.13-200pg/mL	1.88 pg/mL
RE1070M	Mouse ACTH(Adrenocorticotrophic Hormone) ELISA Kit	15.63-1000pg/mL	9.38 pg/mL
RE1123R	Rat IL-18(Interleukin 18) ELISA Kit	15.63-1000pg/mL	9.38 pg/mL
RE10099	DHVD3(1,25-Dihydroxyvitamin D3) ELISA Kit	156.25-10000 pg/mL	49.5 pg/mL
RE3021R	Rat FSH(Follicle Stimulating Hormone) ELISA Kit	3.13-200ng/mL	1.88 ng/mL

Catalog Number	Product Name	Detection Range	Sensitivity
RE2857H	Human SDF-1/CXCL12(Stromal Cell Derived Factor 1) ELISA Kit	0.16-10ng/mL	0.1 ng/mL
RE2925M	Mouse Aβ1-42(Amyloid Beta 1-42) ELISA Kit	3.13-200pg/mL	1.88 pg/mL
RE2933M	Mouse CGRP1(Calcitonin Gene Related Peptide 1) ELISA Kit	15.63-1000pg/mL	9.38 pg/mL
RE3186M	Mouse IL-6(Interleukin 6) ELISA Kit	1.56-100pg/mL	0.2 pg/mL
RE1045H	Human HGF(Hepatocyte Growth Factor) ELISA Kit	15.63-1000pg/mL	7.65 pg/mL
RE1070M	Mouse ACTH(Adrenocorticotropic Hormone) ELISA Kit	15.63-1000pg/mL	9.38 pg/mL
RE3186R	Rat IL-6(Interleukin 6) ELISA Kit	31.25- 2000pg/mL	28.77 pg/mL
RE1060R	Rat TNF-α(Tumor Necrosis Factor Alpha) ELISA Kit	0.78-50pg/mL	0.15 pg/mL
RE2863H	Human IGF-1(Insulin-like Growth Factor 1) ELISA Kit	1.57-100ng/mL	0.94 ng/mL
RE2938M	Mouse TNNI3/cTn-I(Troponin I Type 3, Cardiac) ELISA Kit	7.82-500pg/mL	4.69 pg/mL
RE1766R	Rat OC/BGP (Osteocalcin) ELISA Kit	0.79-50ng/mL	0.47 ng/mL
RE1061H	Human VEGF-A(Vascular Endothelial Cell Growth Factor A) ELISA Kit	31.25-2000pg/mL	18.75 pg/mL
RE3187M	Mouse IL-10(Interleukin 10) ELISA Kit	15.63-1000pg/mL	9.38 pg/mL
RE3376M	Mouse AMH(Anti-Mullerian Hormone) ELISA Kit	0.79-50ng/mL	0.47 ng/mL
RE2866H	Human IL-2(Interleukin 2) ELISA Kit	7.82-500pg/mL	4.69 pg/mL
RE3159R	Rat CRP(C-Reactive Protein) ELISA Kit	7.82-500pg/mL	4.69 pg/mL
RE2736H	Human Hepc(Hepcidin)ELISA Kit	62.5-4000pg/mL	37.5 pg/mL
RE3160H	Human LTF/LF(Lactoferrin) ELISA Kit	0.32-20ng/mL	0.19 ng/mL
RE2794H	Human MMP-1(Matrix Metalloproteinase 1) ELISA Kit	15.63-1000pg/mL	4.52 pg/mL
RE1055R	Rat IL-4(Interleukin 4) ELISA Kit	15.63-1000pg/mL	9.38 pg/mL
RE2770H	Human COL3(Collagen Type III) ELISA Kit	0.32-20ng/mL	0.19 ng/mL
RE1059R	Rat IFN-γ(Interferon Gamma) ELISA Kit	31.25-2000pg/mL	16.64 pg/mL
RE1463M	Mouse CTX I (Cross Linked C-telopeptide of Type I Collagen) ELISA Kit	31.25-2000pg/mL	18.75 pg/mL
RE2733H	Human IL-8(Interleukin 8) ELISA Kit	7.82-500pg/mL	4.69 pg/mL
RE1060H	Human TNF-α(Tumor Necrosis Factor Alpha) ELISA Kit	3.13-200pg/mL	0.18pg/mL
RE2788H	Human LRG1 (Leucine Rich Alpha-2-Glycoprotein 1) ELISA Kit	0.63-40ng/mL	0.38 ng/mL
RE2825H	Human ALB(Albumin) ELISA Kit	1.56-100ng/mL	1.42 ng/mL
RE1055M	Mouse IL-4(Interleukin 4) ELISA Kit	31.25-2000pg/mL	18.75 pg/mL
RE1075M	Mouse IL-12(Interleukin 12) ELISA Kit	0.79-50pg/mL	0.47 pg/mL
RE1939H	Human GzmB(Granzyme B) ELISA Kit	15.63-1000pg/mL	9.38 pg/mL
RE3086M	Mouse IgM(Immunoglobulin M) ELISA Kit	3.13-200ng/mL	1.88 ng/mL
RE10185	8-OHdG(8-Hydroxydeoxyguanosine) ELISA Kit	1.56-100 ng/mL	0.94 ng/mL
RE10177	E2(Estradiol) ELISA Kit	12.5-800 pg/mL	7.5 pg/mL
RE1028M	Mouse IP-10/CXCL10(Interferon Gamma Induced Protein 10kDa) ELISA Kit	31.25-2000pg/mL	18.75 pg/mL
RE1123M	Mouse IL-18(Interleukin 18) ELISA Kit	15.63-1000pg/mL	9.38 pg/mL
RE3186H	Human IL-6(Interleukin 6) ELISA Kit	1.57-100pg/mL	0.94 pg/mL
RE1074M	Mouse IL-1β(Interleukin 1 Beta) ELISA Kit	3.91-250pg/mL	2.35 pg/mL
RE2739M	Mouse LEP(Leptin) ELISA Kit	7.81-500pg/mL	1.01 pg/mL
RE3193R	Rat BNP(Brain Natriuretic Peptide) ELISA Kit	31.25-2000pg/mL	18.75 pg/mL
RE2731H	Human MCP-1(Monocyte Chemotactic Protein 1) ELISA Kit	15.63-1000pg/mL	9.38 pg/ml
RE1123H	Human IL-18(Interleukin 18) ELISA Kit	7.81-500pg/mL	0.89 pg/mL

RE2848M	Mouse BDNF(Brain Derived Neurotrophic Factor) ELISA Kit	31.25-2000pg/mL	18.75 pg/mL
RE1766M	Mouse OC/BGP(Osteocalcin) ELISA Kit	0.4-25ng/mL	0.24 ng/mL
RE2867M	Mouse IL-17A(Interleukin 17A) ELISA Kit	0.78-50pg/mL	0.41 pg/mL
RE1074H	Human IL-1β(Interleukin 1 Beta) ELISA Kit	0.31-20pg/mL	0.18 pg/mL
RE2867R	Rat IL-17A(Interleukin 17A) ELISA Kit	15.63-1000pg/mL	9.38 pg/mL
RE3154M	Mouse TSH(Thyroid Stimulating Hormone) ELISA Kit	1.25-80ng/mL	0.75 ng/mL
RE3153H	Human INS(Insulin) ELISA Kit	0.16-10μIU/mL	0.04 μIU/mL
RE1059H	Human IFN-γ(Interferon Gamma) ELISA Kit	12.5-800pg/mL	2.94 pg/mL
RE2740M	Mouse MAU(Microalbuminuria) ELISA Kit	0.16-10ng/mL	0.1 ng/mL
RE2924H	Human Aβ1-40(Amyloid Beta 1-40) ELISA Kit	15.63-1000pg/mL	9.38 pg/mL
RE2775M	Mouse C3(Complement Component 3) ELISA Kit	3.13-200ng/mL	1.88 ng/mL
RE3155H	Human EPO(Erythropoietin) ELISA Kit	1.57-100mIU/mL	0.94 mIU/mL
RE1046M	Mouse IFN-β(Interferon Beta) ELISA Kit	15.63-1000pg/mL	9.38 pg/mL
RE3153R	Rat INS(Insulin) ELISA Kit	6.25-400pg/mL	3.75 pg/mL
RE1033H	Human EGF(Epidermal Growth Factor) ELISA Kit	1.56-100pg/mL	0.22 pg/mL
RE3153M	Mouse INS(Insulin) ELISA Kit	3.13-200pg/mL	1.88 pg/mL
RE1046H	Human IFN-β(Interferon Beta) ELISA Kit	31.25-2000pg/mL	18.75 pg/mL
RE2839H	Human IFNα(Interferon Alpha) ELISA Kit	7.82-500pg/mL	4.69 pg/mL
RE1061M	Mouse VEGF-A(Vascular Endothelial Cell Growth Factor A) ELISA Kit	31.25-2000pg/mL	18.75 pg/mL
RE1059M	Mouse IFN-γ(Interferon Gamma) ELISA Kit	1.56-100pg/mL	0.94 pg/mL
RE10013	TGF-β1(Transforming Growth Factor Beta 1) ELISA Kit	31.25-2000pg/mL	18.75 pg/mL
RE3059H	Human HMGB-1(High Mobility group protein B1) ELISA Kit	31.25-2000pg/mL	18.75 pg/mL
RE10134	EPI(Epinephrine/Adrenaline) ELISA Kit	31.25-2000 pg/mL	9.74 pg/mL
RE2825M	Mouse ALB(Albumin) ELISA Kit	62.5-4000ng/mL	37.5 ng/mL
RE2837M	Mouse ADP/Acrp30(Adiponectin) ELISA Kit	15.63-1000pg/mL	9.38 pg/mL
RE3184M	Mouse NT-proBNP(N-terminal pro-Brain Natriuretic Peptide) ELISA Kit	15.63-1000pg/mL	9.38 pg/mL
RE2839M	Mouse IFNα(Interferon Alpha) ELISA Kit	15.63-1000pg/mL	9.38 pg/mL
RE3193M	Mouse BNP(Brain Natriuretic Peptide) ELISA Kit	15.63-1000pg/mL	9.38 pg/mL
RE1419M	Mouse NOS2/iNOS(Nitric Oxide Synthase 2, Inducible) ELISA Kit	0.32-20ng/mL	0.19 ng/mL
RE1056M	Mouse IL-13(Interleukin 13) ELISA Kit	31.25-2000pg/mL	18.75 pg/mL
RE2796H	Human MMP-9(Matrix Metalloproteinase 9) ELISA Kit	0.16-10ng/mL	0.05 ng/mL
RE1074R	Rat IL-1β(Interleukin 1 Beta) ELISA Kit	15.63-1000pg/mL	9.38 pg/mL
RE1123R	Rat IL-18(Interleukin 18) ELISA Kit	15.63-1000pg/mL	9.38 pg/mL
RE1055H	Human IL-4(Interleukin 4) ELISA Kit	31.25-2000pg/mL	18.75 pg/mL
RE3021R	Rat FSH(Follicle Stimulating Hormone) ELISA Kit	3.13-200ng/mL	1.88 ng/mL
RE3376R	Rat AMH(Anti-Mullerian Hormone) ELISA Kit	62.5-4000pg/mL	37.5 pg/mL
RE3202M	Mouse RANTES(Regulated On Activation, Normal T-Cell Expressed and Secreted) ELISA Kit	31.25-2000pg/mL	18.75 pg/mL
RE1453M	Mouse C3a(Complement Component 3a) ELISA Kit	0.16-10ng/mL	0.1 ng/mL
RE2731M	Mouse MCP-1(Monocyte Chemotactic Protein 1) ELISA Kit	1.56-100pg/mL	0.22 pg/mL
RE2925H	Human Aβ1-42(Amyloid Beta 1-42) ELISA Kit	15.63-1000pg/mL	9.38 pg/mL
RE2805H	Human sTfR1(Soluble Transferrin Receptor 1) ELISA Kit	6.25-400ng/mL	3.75 ng/mL
RE3059M	Mouse HMGB-1(Highmobility group protein B1) ELISA Kit	15.63-1000pg/mL	9.38 pg/mL

Catalog Number	Product Name	Detection Range	Sensitivity
RE3186H	Human IL-6(Interleukin 6) ELISA Kit	1.57-100pg/mL	0.94 pg/mL
RE2837M	Mouse ADP/Acrp30(Adiponectin) ELISA Kit	15.63-1000pg/mL	9.38 pg/mL
RE1410H	Human NEFL(Neurofilament, Light Polypeptide) ELISA Kit	15.63-1000pg/mL	9.38 pg/mL
RE1419H	Human NOS2/iNOS(Nitric Oxide Synthase 2, Inducible) ELISA Kit	78.13-5000pg/mL	46.88 pg/mL
RE1821H	Human TNC(Tenascin C) ELISA Kit	0.32-20ng/mL	0.19 ng/mL
RE1050H	Human LIF(Leukemia Inhibitory Factor) ELISA Kit	31.25-2000pg/mL	18.75 pg/mL
RE2741M	Mouse LH(Luteinizing Hormone) ELISA Kit	0.32-20ng/mL	0.19 ng/mL
RE3032M	Mouse PYY(Peptide YY) ELISA Kit	15.63-1000pg/mL	9.38 pg/mL
RE1917H	Human PGRN(Progranulin) ELISA Kit	62.5-4000pg/mL	37.5 pg/mL
RE2872M	Mouse FE(Ferritin) ELISA Kit	1.57-100ng/mL	0.94 ng/mL
RE3184R	Rat NT-proBNP(N-Terminal Pro-Brain Natriuretic Peptide) ELISA Kit	62.5-4000pg/mL	37.5 pg/mL
RE2747H	Human GLP-1(Glucagon Like Peptide 1) ELISA Kit	1.57-100pg/mL	0.94 pg/mL
RE2264M	Mouse VIP(Vasoactive Intestinal Peptide) ELISA Kit	12.5-800pg/mL	7.5 pg/mL
RE2184M	Mouse MT(Melatonin) ELISA Kit	7.82-500pg/mL	4.69 pg/mL
RE10134	EPI(Epinephrine/Adrenaline) ELISA Kit	31.25-2000 pg/mL	9.74 pg/mL
RE3008M	Mouse NSE(Neuron Specific Enolase) ELISA Kit	78.13-5000pg/mL	46.88 pg/mL
RE10171	OT(Oxytocin) ELISA Kit	15.63-1000 pg/mL	5.51 pg/mL
RE2837H	Human ADP/Acrp30(Adiponectin) ELISA Kit	31.25-2000pg/mL	18.75 pg/mL
RE1419M	Mouse NOS2/iNOS(Nitric Oxide Synthase 2, Inducible) ELISA Kit	0.32-20ng/mL	0.19 ng/mL
RE10135	DA(Dopamine) ELISA Kit	15.63-1000 pg/mL	4.71 pg/mL
RE2872R	Rat FE(Ferritin) ELISA Kit	15.63-1000ng/mL	9.38 ng/mL
RE2244H	Human SOD2(Superoxide Dismutase 2, Mitochondrial) ELISA Kit	0.31-20 ng/mL	0.16 ng/mL
RE3184H	Human NT-proBNP(N-Terminal Pro-Brain Natriuretic Peptide) ELISA Kit	3.91-250pg/mL	0.76 pg/mL
RE1678R	Rat NGF(Nerve Growth Factor) ELISA Kit	39.07-2500pg/mL	23.44 pg/mL
RE2925M	Mouse Aβ1-42(Amyloid Beta 1-42) ELISA Kit	3.13-200pg/mL	1.88 pg/mL
RE1923H	Human TSP-1(Thrombospondin-1) ELISA Kit	7.82-500ng/mL	4.69 ng/mL
RE3287H	Human PSA(Prostate Specific Antigen) ELISA Kit	0.31-20ng/mL	0.19 ng/mL
RE2458H	Human TNFRSF1B(Tumor Necrosis Factor Receptor Superfamily, Member 1B) ELISA Kit	7.82-500pg/mL	4.69 pg/mL
RE2264H	Human VIP(Vasoactive Intestinal Peptide) ELISA Kit	7.82-500pg/mL	4.69 pg/mL
RE1552H	Human SNCα(Synuclein Alpha) ELISA Kit	15.63-1000pg/mL	9.38 pg/mL
RE2813H	Human GFAP(Glial Fibrillary Acidic Protein) ELISA Kit	15.63-1000pg/mL	9.38 pg/mL
RE10007	4-HNE(4-Hydroxynonenal) ELISA Kit	0.63-40 ng/mL	0.38 ng/mL
RE3193M	Mouse BNP(Brain Natriuretic Peptide) ELISA Kit	15.63-1000pg/mL	9.38 pg/mL
RE2747R	Rat GLP-1(Glucagon Like Peptide 1) ELISA Kit	1.57-100pg/mL	0.94 pg/mL
RE1152H	Human AGER(Total Advanced Glycosylation End Product Specific Receptor) ELISA Kit	78.13-5000pg/mL	46.88 pg/mL
RE2924M	Mouse Aβ1-40(Amyloid Beta 1-40) ELISA Kit	7.82-500pg/mL	4.69 pg/mL
RE2871H	Human LP-a(Lipoprotein A) ELISA Kit	0.24-15ng/mL	0.14 ng/mL
RE1678M	Mouse NGF(Nerve growth factor) ELISA Kit	31.25-2000pg/mL	18.75 pg/mL
RE2121M	Mouse GHRL(Ghrelin) ELISA Kit	0.16-10ng/mL	0.1 ng/mL
RE3154R	Rat TSH(Thyroid Stimulating Hormone) ELISA Kit	1.25-80ng/mL	0.75 ng/mL

RE2763H	Human bFGF/FGF2(Basic Fibroblast Growth Factor) ELISA Kit	31.25-2000pg/mL	18.75 pg/mL
RE10009	SP(Substance P) ELISA Kit	78.13-5000 pg/mL	46.88 pg/mL
RE10177	E2(Estradiol) ELISA Kit	12.5-800 pg/mL	7.5 pg/mL
RE2820H	Human SHBG(Sex Hormone Binding Globulin) ELISA Kit	1.57-100pmol/mL	0.94 pmol/mL
RE3008R	Rat NSE(Neuron Specific Enolase) ELISA Kit	0.32-20ng/mL	0.19 ng/mL
RE1857H	Human GAL3(Galectin 3) ELISA Kit	0.16-10ng/mL	0.1 ng/mL
RE3153M	Mouse INS(Insulin) ELISA Kit	3.13-200pg/mL	1.88 pg/mL
RE3008H	Human NSE(Neuron Specific Enolase) ELISA Kit	78.13-5000pg/mL	35.16 pg/mL
RE3193H	Human BNP(Brain Natriuretic Peptide) ELISA Kit	125-8000pg/mL	75 pg/mL
RE1319H	Human β-EP(Beta-Endorphin) ELISA Kit	15.63-1000pg/mL	9.38 pg/mL
RE1729M	Mouse S100A8(S100 Calcium Binding Protein A8) ELISA Kit	62.5-4000pg/mL	37.5 pg/mL
RE2675H	Human VCAM-1/CD106(Vascular Cell Adhesion Molecule 1) ELISA Kit	1.57-100ng/mL	0.94 ng/mL
RE10161	5-HIAA(5-Hydroxyindoleacetic Acid) ELISA Kit	6.25-400 ng/mL	1.93 ng/mL
RE2848M	Mouse BDNF(Brain Derived Neurotrophic Factor) ELISA Kit	31.25-2000pg/mL	18.75 pg/mL
RE1421M	Mouse NOS3/eNOS(Nitric Oxide Synthase 3, Endothelial) ELISA Kit	15.63-1000pg/mL	9.38 pg/mL
RE10132	NA/NE(Noradrenaline/Norepinephrine) ELISA Kit	78.13-5000 pg/mL	26.1 pg/mL
RE2925H	Human Aβ1-42(Amyloid Beta 1-42) ELISA Kit	15.63-1000pg/mL	9.38 pg/mL
RE10165	MDA(Malondialdehyde) ELISA Kit	31.25-2000 ng/mL	9.15 ng/mL
RE1738H	Human SDC1(Syndecan 1) ELISA Kit	0.16-10ng/mL	0.1 ng/mL
RE1678H	Human NGF(Nerve Growth Factor) ELISA Kit	15.63-1000pg/mL	9.38 pg/mL
RE10166	ST/5-HT(Serotonin/5-Hydroxytryptamine) ELISA Kit	14.07-900 ng/mL	3.97 ng/mL
RE10129	ACH(Acetylcholine) ELISA Kit	15.63-1000 pg/mL	5.31 pg/mL
RE2184H	Human MT(Melatonin) ELISA Kit	15.63-1000pg/mL	9.38 pg/mL
RE1070M	Mouse ACTH(Adrenocorticotrophic Hormone) ELISA Kit	15.63-1000pg/mL	9.38 pg/mL
RE3153H	Human INS(Insulin) ELISA Kit	0.16-10μIU/mL	0.04 μIU/mL
RE2739H	Human LEP(Leptin) ELISA Kit	15.63-1000pg/mL	9.38 pg/mL
RE2264R	Rat VIP(Vasoactive Intestinal Peptide) ELISA Kit	7.82-500pg/mL	4.69 pg/mL
RE2872H	Human FE(Ferritin) ELISA Kit	0.31-20ng/mL	0.19 ng/mL
RE2848H	Human BDNF(Brain Derived Neurotrophic Factor) ELISA Kit	31.25-2000pg/mL	18.75 pg/mL
RE1410M	Mouse NEFL(Neurofilament, Light Polypeptide) ELISA Kit	0.16-10ng/mL	0.1 ng/mL
RE1262M	Mouse ApoE(Apolipoprotein E) ELISA Kit	1.57-100ng/mL	0.94 ng/mL
RE3044H	Human NFκB-p65(Nuclear Factor Kappa B p65) ELISA Kit	0.16-10ng/mL	0.1 ng/mL
RE1596H	Human GAL9(Galectin 9) ELISA Kit	7.82-500pg/mL	4.69 pg/mL
RE3186M	Mouse IL-6(Interleukin 6) ELISA Kit	1.56-100pg/mL	0.2 pg/mL
RE1070R	Rat ACTH(Adrenocorticotrophic Hormone) ELISA Kit	15.63-1000pg/mL	9.38 pg/mL
RE1868M	Mouse GDNF(Glial Cell Line Derived Neurotrophic Factor) ELISA Kit	15.63-1000pg/mL	9.38 pg/mL
RE2276H	Human HO1(Heme Oxygenase 1) ELISA Kit	0.32-20ng/mL	0.19 ng/mL
RE2924H	Human Aβ1-40(Amyloid Beta 1-40) ELISA Kit	15.63-1000pg/mL	9.38 pg/mL
RE1868H	Human GDNF(Glial Cell Line Derived Neurotrophic Factor) ELISA Kit	0.32-20ng/mL	0.19 ng/mL
RE3193R	Rat BNP(Brain Natriuretic Peptide) ELISA Kit	31.25-2000pg/mL	18.75 pg/mL
RE2763M	Mouse bFGF/FGF2(Basic Fibroblast Growth Factor) ELISA Kit	15.63-1000pg/mL	9.38 pg/mL
RE2925R	Rat Aβ1-42(Amyloid Beta 1-42) ELISA Kit	15.63-1000pg/mL	9.38 pg/mL

Catalog Number	Product Name	Detection Range	Sensitivity
RE1358M	Mouse cTnT/TNNT2(Troponin T Type 2, Cardiac) ELISA Kit	15.63-1000pg/mL	9.38 pg/mL
RE2739M	Mouse LEP(Leptin) ELISA Kit	7.81-500pg/mL	1.01 pg/mL
RE1923M	Mouse TSP-1(Thrombospondin-1) ELISA Kit	39.07-2500pg/mL	23.44 pg/mL
RE3376M	Mouse AMH(Anti-Mullerian Hormone) ELISA Kit	0.79-50ng/mL	0.47 ng/mL
RE2675M	Mouse VCAM-1/CD106(Vascular cell adhesion molecule 1) ELISA Kit	0.16-10ng/mL	0.1 ng/mL
RE1059M	Mouse IFN-γ(Interferon Gamma) ELISA Kit	1.56-100pg/mL	0.94 pg/mL
RE1628H	Human FGF23(Fibroblast Growth Factor 23) ELISA Kit	15.63-1000pg/mL	9.38 pg/mL
RE1059R	Rat IFN-γ(Interferon Gamma) ELISA Kit	31.25-2000pg/mL	16.64 pg/mL
RE1363H	Human COMP(Cartilage Oligomeric Matrix Protein) ELISA Kit	0.63-40ng/mL	0.38 ng/mL
RE1003R	Rat BMP-2(Bone Morphogenetic Protein 2) ELISA Kit	62.5-4000pg/mL	37.5 pg/mL
RE2675H	Human VCAM-1/CD106(Vascular Cell Adhesion Molecule 1) ELISA Kit	1.57-100ng/mL	0.94 ng/mL
RE1737M	Mouse S100B(S100 Calcium Binding Protein B) ELISA Kit	78.13-5000pg/mL	46.88 pg/mL
RE2737H	Human Gas6(Growth Arrest Specific Protein 6) ELISA Kit	62.5-4000pg/mL	37.5 pg/mL
RE1770R	Rat OPN(Osteopontin) ELISA Kit	1.57-100ng/mL	0.94 ng/mL
RE3377H	Human Cys-C(Cystatin C) ELISA Kit	1.56-100ng/mL	0.94 ng/mL
RE2739H	Human LEP(Leptin) ELISA Kit	15.63-1000pg/mL	9.38 pg/mL
RE1147H	Human FABP4(Fatty Acid Binding Protein 4, Adipocyte) ELISA Kit	0.4-25ng/mL	0.24 ng/mL
RE2837H	Human ADP/Acrp30(Adiponectin) ELISA Kit	31.25-2000pg/mL	18.75 pg/mL
RE2740M	Mouse MAU(Microalbuminuria) ELISA Kit	0.16-10ng/mL	0.1 ng/mL
RE3536H	Human TM(Thrombomodulin) ELISA Kit	62.5-4000pg/mL	37.5 pg/mL
RE3377M	Mouse Cys-C(Cystatin C) ELISA Kit	15.63-1000pg/mL	9.38 pg/mL
RE3205M	Mouse PCSK9(Proprotein Convertase Subtilisin/Kexin Type 9) ELISA Kit	62.5-4000pg/mL	37.5 pg/mL
RE1089H	Human FN(Fibronectin) ELISA Kit	1.57-100ng/mL	0.94 ng/mL
RE2870M	Mouse IFABP/FABP2(Intestinal Fatty Acid Binding Protein) ELISA Kit	0.16-10ng/mL	0.1 ng/mL
RE3008H	Human NSE(Neuron Specific Enolase) ELISA Kit	78.13-5000pg/mL	35.16 pg/mL
RE2938H	Human TNNI3/cTn-I(Troponin I Type 3, Cardiac) ELISA Kit	3.13-200pg/mL	1.13 pg/mL
RE1262H	Human ApoE(Apolipoprotein E) ELISA Kit	23.44-1500ng/mL	14.06 ng/mL
RE1737H	Human S100B(S100 Calcium Binding Protein B) ELISA Kit	7.81-500pg/mL	3.11 pg/mL
RE1737R	Rat S100B(S100 Calcium Binding Protein B) ELISA Kit	62.5-4000pg/mL	37.5 pg/mL
RE2813H	Human GFAP(Glial Fibrillary Acidic Protein) ELISA Kit	15.63-1000pg/mL	9.38 pg/mL
RE1739H	Human SCF(Stem Cell Factor) ELISA Kit	7.81-500pg/mL	1.51 pg/mL
RE3066H	Human TGF-β2(Transforming Growth Factor Beta 2) ELISA Kit	31.25-2000pg/mL	18.75 pg/mL
RE3205H	Human PCSK9(Proprotein Convertase Subtilisin/Kexin Type 9) ELISA Kit	0.23-15ng/mL	0.03ng/mL
RE1900H	Human SOST(Sclerostin) ELISA Kit	62.5-4000pg/mL	37.5 pg/mL
RE2768H	Human CEA(Carcinoembryonic Antigen) ELISA Kit	15.63-1000pg/mL	2.25 pg/mL
RE1003H	Human BMP-2(Bone Morphogenetic Protein 2) ELISA Kit	62.5-4000pg/mL	37.5 pg/mL
RE2825R	Rat ALB (Albumin) ELISA Kit	3.13-200μg/mL	1.88 μg/mL
RE1628M	Mouse FGF23(Fibroblast Growth Factor 23) ELISA Kit	15.63-1000pg/mL	9.38 pg/mL
RE2825M	Mouse ALB(Albumin) ELISA Kit	62.5-4000ng/mL	37.5 ng/mL
RE1738H	Human SDC1(Syndecan 1) ELISA Kit	0.16-10ng/mL	0.1 ng/mL
RE2837M	Mouse ADP/Acrp30(Adiponectin) ELISA Kit	15.63-1000pg/mL	9.38 pg/mL

RE2870H	Human IFABP/FABP2(Intestinal Fatty Acid Binding Protein) ELISA Kit	0.16-10ng/mL	0.1 ng/mL
RE2763H	Human bFGF/FGF2(Basic Fibroblast Growth Factor) ELISA Kit	31.25-2000pg/mL	18.75 pg/mL
RE1739M	Mouse SCF(Stem Cell Factor) ELISA Kit	15.63-1000pg/mL	9.38 pg/mL
RE3376H	Human AMH(Anti-Mullerian Hormone) ELISA Kit	78.13-5000pg/mL	25.97 pg/mL
RE1434H	Human COL1α2(Collagen Type I Alpha 2) ELISA Kit	0.16-10ng/mL	0.1 ng/mL
RE1032H	Human DKK1(Dickkopf Related Protein 1) ELISA Kit	31.25-2000pg/mL	18.75 pg/mL
RE3376R	Rat AMH(Anti-Mullerian Hormone) ELISA Kit	62.5-4000pg/mL	37.5 pg/mL
RE10013	TGF-β1(Transforming Growth Factor Beta 1) ELISA Kit	31.25-2000pg/mL	18.75 pg/mL
RE2938R	Rat TNNI3/cTn-I(Troponin I Type 3, Cardiac) ELISA Kit	31.25-2000pg/mL	18.75 pg/mL
RE1900M	Mouse SOST(Sclerostin) ELISA Kit	15.63-1000pg/mL	9.38 pg/mL
RE1770M	Mouse OPN(Osteopontin) ELISA Kit	0.16-10ng/mL	0.1 ng/mL
RE1214M	Mouse GC(Glucagon) ELISA Kit	31.25-2000pg/mL	18.75 pg/mL
RE1782H	Human PPAR-γ(Peroxisome Proliferator Activated Receptor Gamma) ELISA Kit	0.16-10ng/mL	0.1 ng/mL
RE2831H	Human ICAM-1/CD54(intercellular adhesion molecule 1) ELISA Kit	31.25-2000pg/mL	4.50 pg/mL
RE2740R	Rat MAU(Microalbuminuria) ELISA Kit	1.57-100μg/mL	0.94 μg/mL
RE1766R	Rat OC/BGP (Osteocalcin) ELISA Kit	0.79-50ng/mL	0.47 ng/mL
RE2938M	Mouse TNNI3/cTn-I(Troponin I Type 3, Cardiac) ELISA Kit	7.82-500pg/mL	4.69 pg/mL
RE3546H	Human TPO(Thrombopoietin) ELISA Kit	31.25-2000pg/mL	18.75 pg/mL
RE2540M	Mouse IL-11(Interleukin 11) ELISA Kit	15.63-1000pg/mL	9.38 pg/mL
RE2770M	Mouse COL3(Collagen Type III) ELISA Kit	15.63-1000ng/mL	9.38 ng/mL
RE1828H	Human FABP3(Fatty Acid Binding Protein 3, Muscle and Heart) ELISA Kit	78.13-5000pg/mL	52.59 pg/mL
RE1923H	Human TSP-1(Thrombospondin-1) ELISA Kit	7.82-500ng/mL	4.69 ng/mL
RE3229M	Mouse COL1(Collagen Type I) ELISA Kit	0.32-20ng/mL	0.19 ng/mL
RE1436H	Human COL3α1(Collagen Type III Alpha 1) ELISA Kit	0.63-40ng/mL	0.38 ng/mL
RE2825H	Human ALB(Albumin) ELISA Kit	1.56-100ng/mL	1.42 ng/mL
RE2805H	Human sTfR1(Soluble Transferrin Receptor 1) ELISA Kit	6.25-400ng/mL	3.75 ng/mL
RE1770H	Human OPN(Osteopontin) ELISA Kit	0.32-20ng/mL	0.19 ng/mL
RE1410M	Mouse NEFL(Neurofilament, Light Polypeptide) ELISA Kit	0.16-10ng/mL	0.1 ng/mL
RE3008M	Mouse NSE(Neuron Specific Enolase) ELISA Kit	78.13-5000pg/mL	46.88 pg/mL
RE2770H	Human COL3(Collagen Type III) ELISA Kit	0.32-20ng/mL	0.19 ng/mL
RE3066M	Mouse TGF-β2(Transforming Growth Factor Beta 2) ELISA Kit	15.63-1000pg/mL	9.38 pg/mL
RE2273M	Mouse VWF(Von Willebrand Factor) ELISA Kit	1.25-80ng/mL	0.75 ng/mL
RE2763R	Rat bFGF/FGF2(Basic Fibroblast Growth Factor) ELISA Kit	15.63-1000pg/mL	9.38 pg/mL
RE3155R	Rat EPO(Erythropoietin) ELISA Kit	62.5-4000pg/mL	37.5 pg/mL
RE1410H	Human NEFL(Neurofilament, Light Polypeptide) ELISA Kit	15.63-1000pg/mL	9.38 pg/mL
RE2273H	Human VWF(Von Willebrand Factor) ELISA Kit	1.57-100ng/mL	0.94 ng/mL
RE2763M	Mouse bFGF/FGF2(Basic Fibroblast Growth Factor) ELISA Kit	15.63-1000pg/mL	9.38 pg/mL
RE2831M	Mouse ICAM-1/CD54(intercellular adhesion molecule 1) ELISA Kit	0.16-10 ng/mL	0.056 ng/mL
RE3203H	Human SELP(P-Selectin) ELISA Kit	31.25-2000pg/mL	18.75 pg/mL
RE1860H	Human PTHrP(Parathyroid Hormone Related Protein) ELISA Kit	15.63-1000pg/mL	9.38 pg/mL
RE1358H	Human cTnT/TNNT2(Troponin T Type 2, Cardiac) ELISA Kit	31.25-2000pg/mL	18.75 pg/mL
RE1358R	Rat cTnT/TNNT2(Troponin T Type 2, Cardiac) ELISA Kit	15.63-1000pg/mL	9.38 pg/mL

Catalog Number	Product Name	Detection Range	Sensitivity
RE3048M	Mouse CKMB(Creatine Kinase MB Isoenzyme) ELISA Kit	78.13-5000pg/mL	46.88 pg/mL
RE1060M	Mouse TNF-α(Tumor Necrosis Factor Alpha) ELISA Kit	0.94-60pg/mL	0.27 pg/mL
RE1060H	Human TNF-α(Tumor Necrosis Factor Alpha) ELISA Kit	3.13-200pg/mL	0.18pg/mL
RE3022M	Mouse CRH(Corticotropin Releasing Hormone) ELISA Kit	0.32-20ng/mL	0.19 ng/mL
RE1060R	Rat TNF-α(Tumor Necrosis Factor Alpha) ELISA Kit	0.78-50pg/mL	0.15 pg/mL
RE3153H	Human INS(Insulin) ELISA Kit	0.16-10μIU/mL	0.04 μIU/mL
RE10129	ACH(Acetylcholine) ELISA Kit	15.63-1000 pg/mL	5.31 pg/mL
RE1033H	Human EGF(Epidermal Growth Factor) ELISA Kit	1.56-100pg/mL	0.22 pg/mL
RE2917M	Mouse ARG1(Arginase1) ELISA Kit	0.79-50ng/mL	0.47 ng/mL
RE2938R	Rat TNNI3/cTn-I(Troponin I Type 3, Cardiac) ELISA Kit	31.25-2000pg/mL	18.75 pg/mL
RE3098H	Human NE/ELA2(Neutrophil Elastase/Elastase-2) ELISA Kit	0.79-50ng/mL	0.47 ng/mL
RE1087R	Rat GH(Growth Hormone) ELISA Kit	1.57-100ng/mL	0.94 ng/mL
RE10008	GnRH(Gonadotropin Releasing Hormone) ELISA Kit	15.63-1000 pg/mL	9.38 pg/mL
RE3064H	Human PDGF-BB(Platelet Derived Growth Factor BB) ELISA Kit	7.81-500 pg/mL	4.69 pg/mL
RE10082	cGMP(Cyclic GMP) ELISA Kit	156.25-10000 pg/mL	45.2 pg/mL
RE10155	GSH(Glutathione) ELISA Kit	1.57-100 ng/mL	0.48 ng/mL
RE2770H	Human COL3(Collagen Type III) ELISA Kit	0.32-20ng/mL	0.19 ng/mL
RE2837M	Mouse ADP/Acrp30(Adiponectin) ELISA Kit	15.63-1000pg/mL	9.38 pg/mL
RE2775H	Human C3(Complement Component 3) ELISA Kit	1.57-100ng/mL	0.94 ng/mL
RE10112	DHT(Dihydrotestosterone) ELISA Kit	39.07-2500 pg/mL	13.3 pg/mL
RE2825H	Human ALB(Albumin) ELISA Kit	1.56-100ng/mL	1.42 ng/mL
RE3376M	Mouse AMH(Anti-Mullerian Hormone) ELISA Kit	0.79-50ng/mL	0.47 ng/mL
RE1070M	Mouse ACTH(Adrenocorticotrophic Hormone) ELISA Kit	15.63-1000pg/mL	9.38 pg/mL
RE1098M	Mouse C5a(Complement Component 5a) ELISA Kit	62.5-4000pg/mL	37.5 pg/mL
RE2938M	Mouse TNNI3/cTn-I(Troponin I Type 3, Cardiac) ELISA Kit	7.82-500pg/mL	4.69 pg/mL
RE2763H	Human bFGF/FGF2(Basic Fibroblast Growth Factor) ELISA Kit	31.25-2000pg/mL	18.75 pg/mL
RE2933M	Mouse CGRP1(Calcitonin Gene Related Peptide 1) ELISA Kit	15.63-1000pg/mL	9.38 pg/mL
RE2863M	Mouse IGF-1(Insulin-like Growth Factor 1) ELISA Kit	15.63-1000ng/mL	9.38 ng/mL
RE1738H	Human SDC1(Syndecan 1) ELISA Kit	0.16-10ng/mL	0.1 ng/mL
RE2206R	Rat MTL(Motilin) ELISA Kit	93.75-6000pg/mL	56.25 pg/mL
RE2736H	Human Hepc(Hepcidin)ELISA Kit	62.5-4000pg/mL	37.5 pg/mL
RE1453M	Mouse C3a(Complement Component 3a) ELISA Kit	0.16-10ng/mL	0.1 ng/mL
RE1089H	Human FN(Fibronectin) ELISA Kit	1.57-100ng/mL	0.94 ng/mL
RE10158	AA(Arachidonic Acid) ELISA Kit	3.13-200 μg/mL	0.94 μg/mL
RE2933H	Human CGRP1(Calcitonin Gene Related Peptide 1) ELISA Kit	15.63-1000pg/mL	9.38 pg/mL
RE2840M	Mouse NGAL(Neutrophil Gelatinase Associated Lipocalin) ELISA Kit	39.07-2500pg/mL	23.44 pg/mL
RE1061R	Rat VEGF-A(Vascular Endothelial Cell Growth Factor A) ELISA Kit	31.25-2000pg/mL	18.75 pg/mL
RE1358R	Rat cTnT/TNNT2(Troponin T Type 2, Cardiac) ELISA Kit	15.63-1000pg/mL	9.38 pg/mL
RE1061H	Human VEGF-A(Vascular Endothelial Cell Growth Factor A) ELISA Kit	31.25-2000pg/mL	18.75 pg/mL
RE3376R	Rat AMH(Anti-Mullerian Hormone) ELISA Kit	62.5-4000pg/mL	37.5 pg/mL
RE1301M	Mouse ANP(Atrial Natriuretic Peptide) ELISA Kit	15.63-1000pg/mL	9.38 pg/mL

RE3154R	Rat TSH(Thyroid Stimulating Hormone) ELISA Kit	1.25-80ng/mL	0.75 ng/mL
RE1036M	Mouse ET-1(Endothelin 1) ELISA Kit	0.79-50pg/mL	0.47 pg/mL
RE3155M	Mouse EPO(Erythropoietin) ELISA Kit	7.82-500pg/mL	4.69 pg/mL
RE2343H	Human MUC5AC(Mucin 5 Subtype AC) ELISA Kit	0.32-20ng/mL	0.19 ng/mL
RE1766M	Mouse OC/BGP(Osteocalcin) ELISA Kit	0.4-25ng/mL	0.24 ng/mL
RE1482H	Human COL1α1(Collagen Type I Alpha 1) ELISA Kit	0.32-20ng/mL	0.19 ng/mL
RE10165	MDA(Malondialdehyde) ELISA Kit	31.25-2000 ng/mL	9.15 ng/mL
RE1540M	Mouse β-CTx(Beta Crosslaps) ELISA Kit	78.13-5000pg/mL	46.88 pg/mL
RE2837H	Human ADP/Acrp30(Adiponectin) ELISA Kit	31.25-2000pg/mL	18.75 pg/mL
RE3021R	Rat FSH(Follicle Stimulating Hormone) ELISA Kit	3.13-200ng/mL	1.88 ng/mL
RE3153R	Rat INS(Insulin) ELISA Kit	6.25-400pg/mL	3.75 pg/mL
RE10134	EPI(Epinephrine/Adrenaline) ELISA Kit	31.25-2000 pg/mL	9.74 pg/mL
RE1699R	Rat DAO(Diamine Oxidase) ELISA Kit	0.16-10ng/mL	0.1 ng/mL
RE1358M	Mouse cTnT/TNNT2(Troponin T Type 2, Cardiac) ELISA Kit	15.63-1000pg/mL	9.38 pg/mL
RE2797M	Mouse I-PTH(intact Parathormone) ELISA Kit	15.63-1000pg/mL	9.38 pg/mL
RE2796M	Mouse MMP-9(Matrix Metalloproteinase 9) ELISA Kit	0.16-10ng/mL	0.03 ng/mL
RE1061M	Mouse VEGF-A(Vascular Endothelial Cell Growth Factor A) ELISA Kit	31.25-2000pg/mL	18.75 pg/mL
RE2813H	Human GFAP(Glial Fibrillary Acidic Protein) ELISA Kit	15.63-1000pg/mL	9.38 pg/mL
RE1453H	Human C3a(Complement Component 3a) ELISA Kit	0.32-20ng/mL	0.19 ng/mL
RE2788H	Human LRG1 (Leucine Rich Alpha-2-Glycoprotein 1) ELISA Kit	0.63-40ng/mL	0.38 ng/mL
RE1410H	Human NEFL(Neurofilament, Light Polypeptide) ELISA Kit	15.63-1000pg/mL	9.38 pg/mL
RE2794H	Human MMP-1(Matrix Metalloproteinase 1) ELISA Kit	15.63-1000pg/mL	4.52 pg/mL
RE1770H	Human OPN(Osteopontin) ELISA Kit	0.32-20ng/mL	0.19 ng/mL
RE1044M	Mouse GDF15(Growth Differentiation Factor 15) ELISA Kit	15.63-1000pg/mL	9.38 pg/mL
RE1649H	Human ELN(Elastin) ELISA Kit	0.47-30ng/mL	0.28 ng/mL
RE3153M	Mouse INS(Insulin) ELISA Kit	3.13-200pg/mL	1.88 pg/mL
RE1042M	Mouse FGF21(Fibroblast Growth Factor 21) ELISA Kit	31.25-2000pg/mL	18.75 pg/mL
RE2741R	Rat LH(Luteinizing Hormone) ELISA Kit	1.57-100mIU/mL	0.94 mIU/mL
RE3021M	Mouse FSH(Follicle Stimulating Hormone) ELISA Kit	1.57-100ng/mL	0.94 ng/mL
RE3154M	Mouse TSH(Thyroid Stimulating Hormone) ELISA Kit	1.25-80ng/mL	0.75 ng/mL
RE2796H	Human MMP-9(Matrix Metalloproteinase 9) ELISA Kit	0.16-10ng/mL	0.05 ng/mL
RE1098H	Human C5a(Complement Component 5a) ELISA Kit	78.13-5000pg/mL	46.88 pg/mL
RE10013	TGF-β1(Transforming Growth Factor Beta 1) ELISA Kit	31.25-2000pg/mL	18.75 pg/mL
RE2395M	Mouse CALP(Calprotectin) ELISA Kit	3.13-200ng/mL	1.88 ng/mL
RE2933R	Rat CGRP1(Calcitonin Gene Related Peptide 1) ELISA Kit	15.63-1000pg/mL	9.38 pg/mL
RE2740M	Mouse MAU(Microalbuminuria) ELISA Kit	0.16-10ng/mL	0.1 ng/mL
RE10133	ALD(Aldosterone) ELISA Kit	31.25-2000pg/mL	28.87 pg/mL
RE2775M	Mouse C3(Complement Component 3) ELISA Kit	3.13-200ng/mL	1.88 ng/mL
RE3048R	Rat CKMB(Creatine Kinase MB Isoenzyme) ELISA Kit	31.25-2000pg/mL	18.75 pg/mL
RE1036H	Human ET-1(Endothelin 1) ELISA Kit	1.25-80pg/mL	0.75 pg/mL
RE2675H	Human VCAM-1/CD106(Vascular Cell Adhesion Molecule 1) ELISA Kit	1.57-100ng/mL	0.94 ng/mL
RE10092	cAMP(Cyclic adenosine monophosphate) ELISA Kit	312.5-20000 pg/mL	92.5 pg/mL